



Inverforth House Hampstead

WELCOME TO INVERFORTH HOUSE

HAMPSTEAD NW₃

Inverforth House, nestled in the heart of Hampstead Heath, offers a country oasis moments from the centre of the capital. The property, once owned by the Baron of Inverforth, was built in 1865 and is now a Grade II listed property.

The property recieved two blue plaques from English Heritage in 2002, first for the Viscount Leverhulme who owned the property between 1904 and 1925, the second for Geneticist and Statistician Ronald Fisher who lived there as a child from 1896 - 1904.

Inverforth House was later divided into nine private residences all benefiting from the exquisite landscaped gardens and views across the heath.







ACCOMMODATION

On the ground floor of the home the living accomodation including two large open plan living dining rooms, large kitchen, cinema room and an exceptional double height study/library.

The upper floors host the bedrooms featuring a principal suite with dressing room and access to a large terrace overlooking the heath. There are 3 further bedrooms all with ensuites and a final guest suite with sitting room and ensuite (which can be accessed by private entrance).

A lift provides access between the two main levels of the home. Additionally, the home offers parking and a lower-ground level with indoor swimming pool and gym.



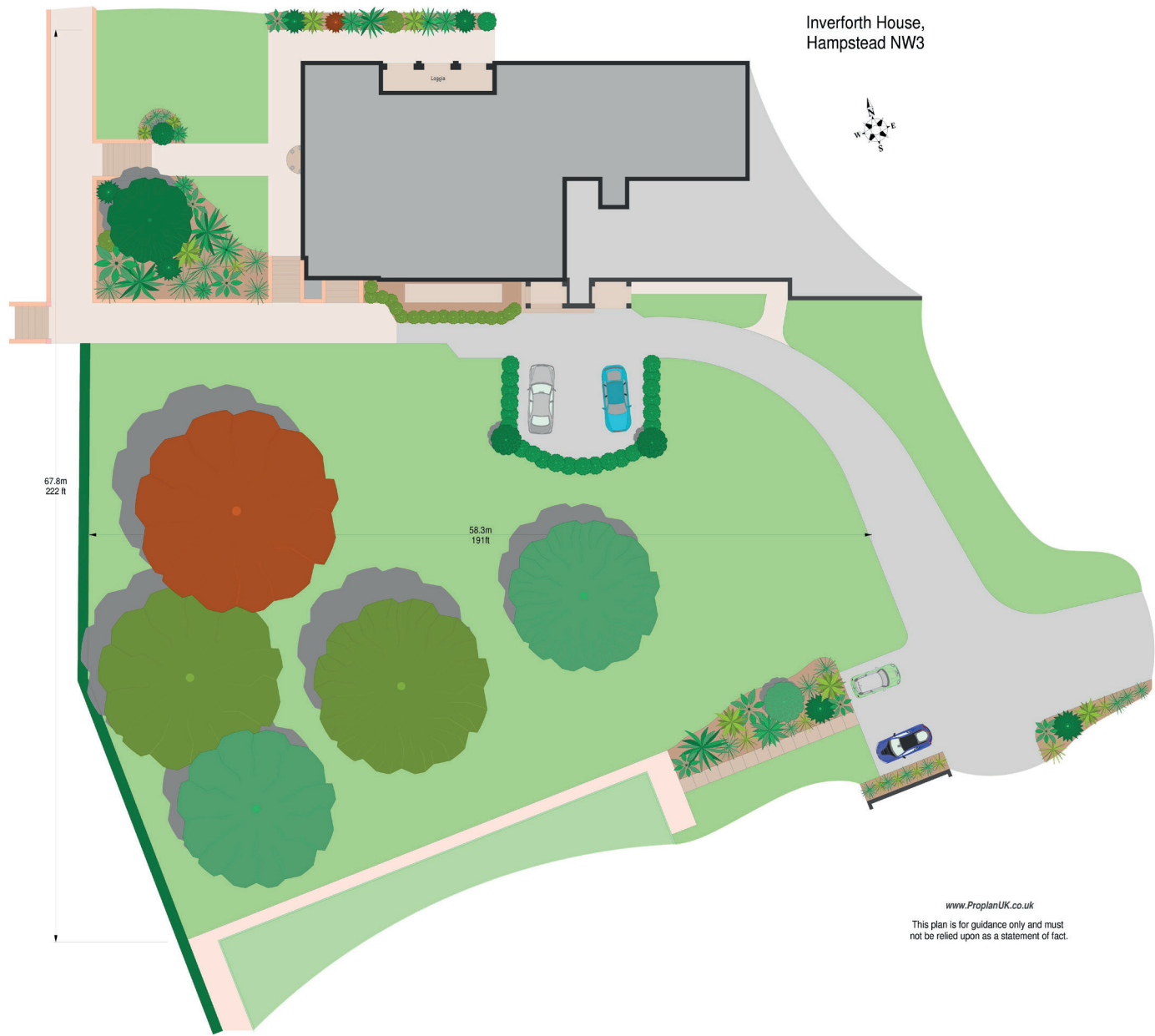
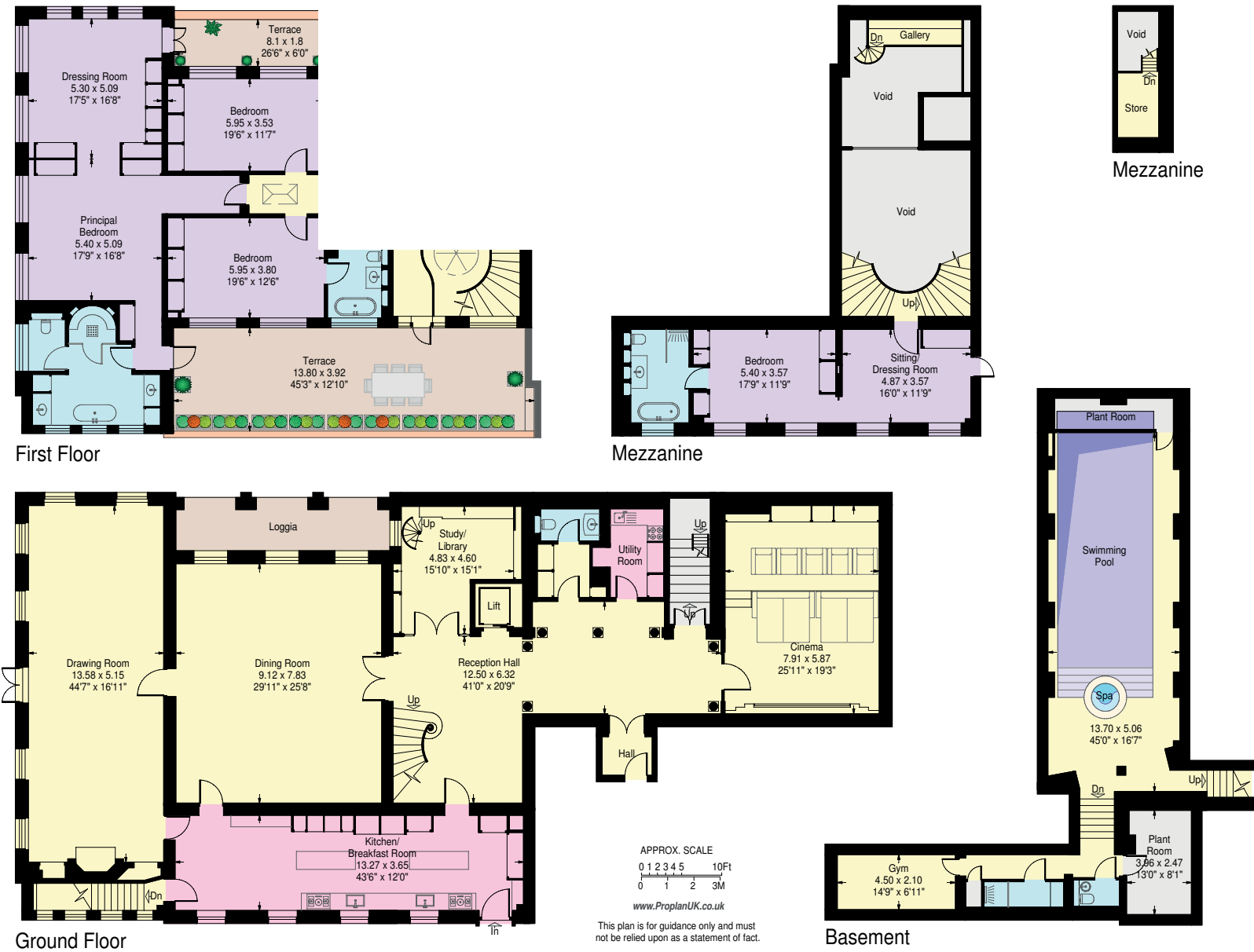


The home has access to the communal tennis court, landscaped gardens and large private gardens with views over the heath. There is also a designated parking space in addition to a triple garage



FLOORPLAN

Approximate Gross
Internal Area:
767.6 sq.m. / 8262
sq.ft.
(Excluding void
areas)





TERMS

Leasehold with Share of Freehold

Price £13, 950,000

Viewings By appointment only

 **BEAUCHAMP**
ESTATES

T: 020 7722 9793

E: sjw@beauchamp.com

80 St John's Wood High St

NW8 7SH

www.beauchamp.com

Beauchamp Estates, their clients and any joint agents give notice that: 1. They are not authorised to make or give any representation or warranties in relation to the property either here or elsewhere, either on their own behalf or on behalf of their client or otherwise. They assume no responsibility for any statement that may be made in these particulars. These particulars do not form part of any offer or contract and must not be relied upon as statements or representations of fact. 2. Any Areas, measurements or distances are approximate. The text photographs and plans are for guidance only and are not necessarily comprehensive. It should not be assumed that the property has all necessary planning, building regulation or other consents and Beauchamp Estates have not tested any services, equipment or facilities. Purchasers must satisfy themselves by inspection or otherwise.