



# PENTHOUSE COLLECTION

# CHIMES

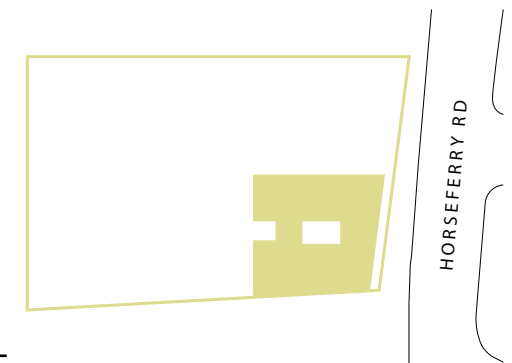
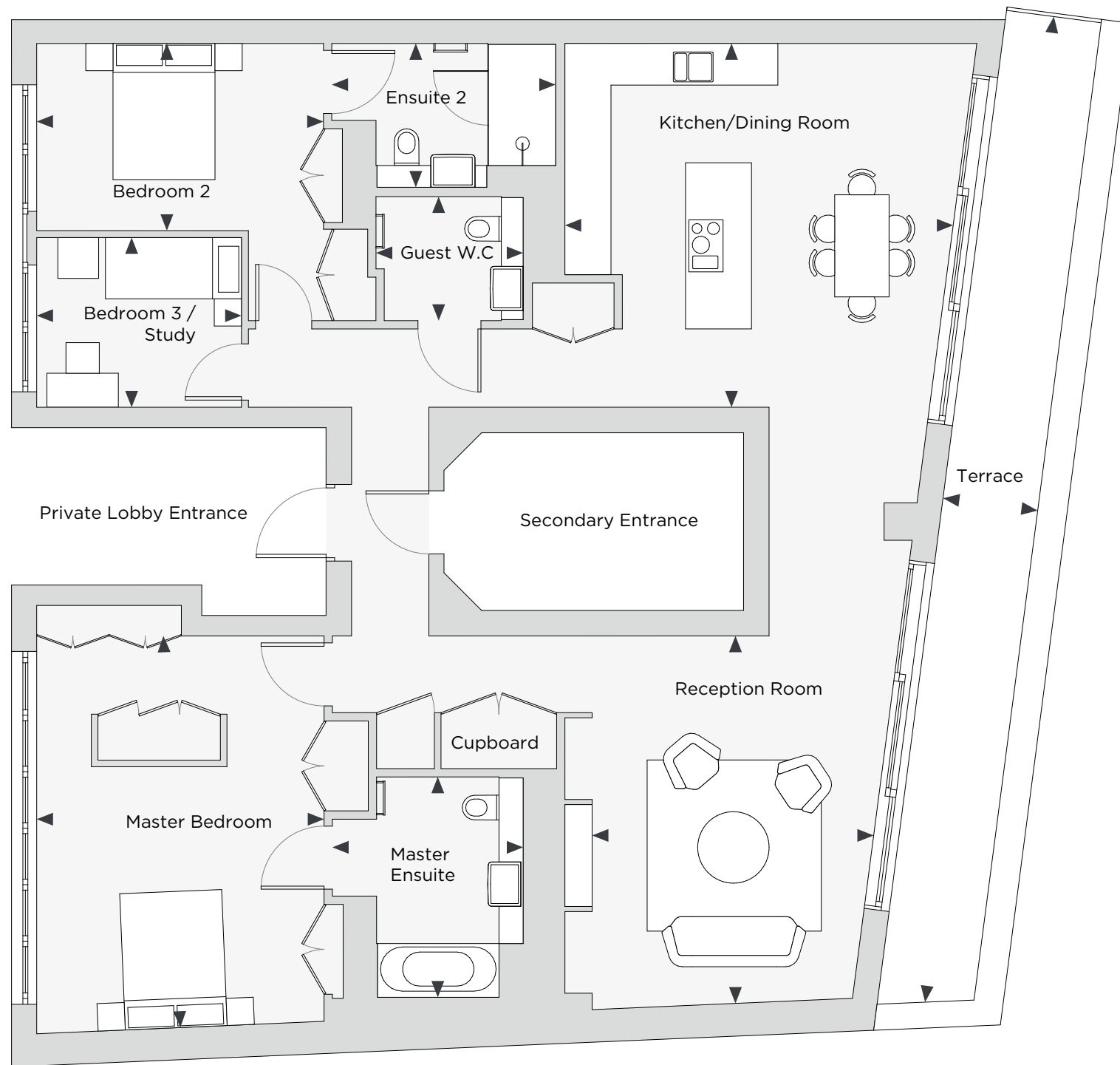
WESTMINSTER

FIFTH FLOOR  
- APARTMENT 40 -

THREE BEDROOM

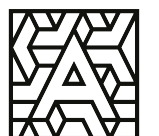
### APARTMENT AREA

KITCHEN/ DINING ROOM 17ft 6in x 18ft 9in	BEDROOM 2 9ft 0in x 13ft 10in
LIVING ROOM 17ft 9in x 13ft 7in	ENSUITE 2 16ft 11in x 10ft 10in
TERRACE 47ft 11in x 4ft 7in	BEDROOM 3 8ft 2in x 9ft 11in
MASTER BEDROOM 18ft 11in x 13ft 10in	BATHROOM 7ft 1in x 6ft 0in
ENSUITE 10ft 7in x 9ft 2in	



## CHIMES FLOORPLANS

All information provided in this document has been published in good faith. However, whilst we endeavour to make such information accurate and reliable, it is only a general guide to the property and cannot be guaranteed and no responsibility or liability is accepted for any error, omission, misrepresentation or misstatement save for liability due to fraudulent misrepresentation and any other liability that cannot be excluded by law. In particular, whilst every attempt has been made to ensure the accuracy of the floor plan and apartment specification, measurements of doors, windows, rooms and any other items are approximate and are intended only as a guide and should be used as such by any prospective purchaser. The floor plans, specifications and measurements are subject to change during the construction of the building(s). Any furniture and other fittings illustrated on any plans or images are for scaling purposes only and, unless otherwise specifically provided, are not included in any offer or contract. Designs and images contained within the brochure are indicative and for illustration purposes only. All sales are subject to contract.



ANTHOLOGY