



Princes Gate, SW7

Knightsbridge, London

PROPERTY REFERENCE: LOR0475

£13,500 /week

CONTACT

Mayfair Lettings

londonlettings@beauchamp.com

+44 (0)20 7499 7722



5 Bedrooms



5 Bathrooms



Swimming
Pool

LIVING AREA: 7187 SQ FT

SUMMARY

An exceptional six-bedroom triplex apartment overlooking Princes Gardens boasting a private indoor swimming pool and leisure facilities

DESCRIPTION

An exceptional six-bedroom triplex apartment overlooking Princes Gardens boasting a private indoor swimming pool and leisure facilities

KEY FEATURES:

Located in the heart of Knightsbridge

High Specification Throughout

High Ceilings

Lift Access

Private Swimming Pool and Leisure Facilities

Cinema Room

Designed and finished to the highest of standards, the remarkable double reception features high ceilings a finely detailed bar which opens onto a spacious private Terrace. Properties of this quality and style are rarely seen in the London rental market and would provide luxury living reserved for those familiar with the prestigious Princes Gate.

ACCOMMODATION:

Entrance

Formal Reception Room

Informal Reception

Four Guest Cloakrooms

Three TV/Media Rooms

Dining Room

Kitchen

Five Ensuite Bedrooms

Two Studies

Private Indoor Swimming Pool with Sauna

Private Terrace

Three Patios

Utility Room

Wine Cellar

Centrally located, Knightsbridge is an exquisite part of London and home to the social elite. The area contains many of London's finest restaurants, shops, art galleries and hotels. Knightsbridge itself is a premier international business location, which benefits from its close proximity to the West End and is in easy reach of the City of London and Canary Wharf.

Knightsbridge is also famed for Hyde Park where you can walk, run, go horse riding or boating on the large Serpentine Lake. In addition, Knightsbridge is considered by many to be London's cultural centerpiece, with The Natural History Museum and The Victoria and Albert Museum close by.

AMENITIES

MAIN FEATURES

- 5 Bedrooms
- 5 Bathrooms
- 1 Kitchen
- 1 Dining room
- 1 Reception room
- 1 Swimming pool

LEISURE

- Indoor pool
- Sauna
- Spa
- Cinema room

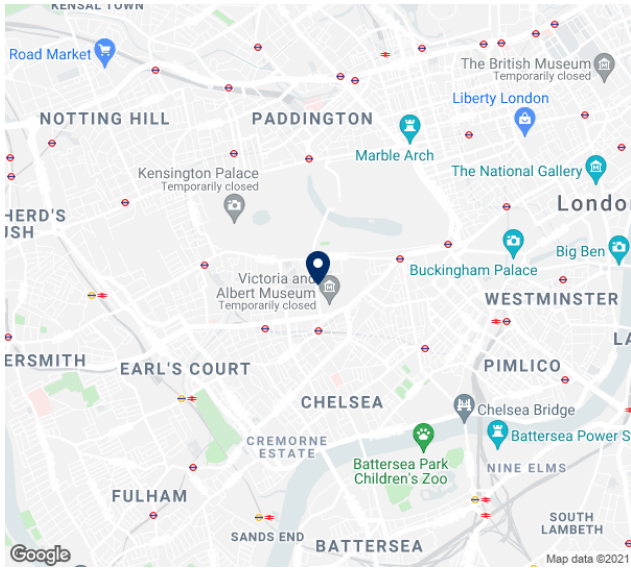
INDOOR FEATURES

- Elevator
- Entrance hall
- Study
- Cinema room
- Guest cloakroom
- Kitchen & breakfast room
- Principal bedroom
- Principal bedroom with ensuite bathroom
- Terrace

OUTDOOR AND LEISURE

- Outside dining
- Indoor pool
- Spa
- Sauna

LOCATION



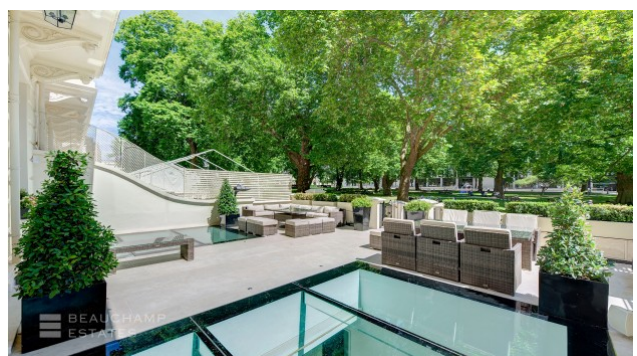
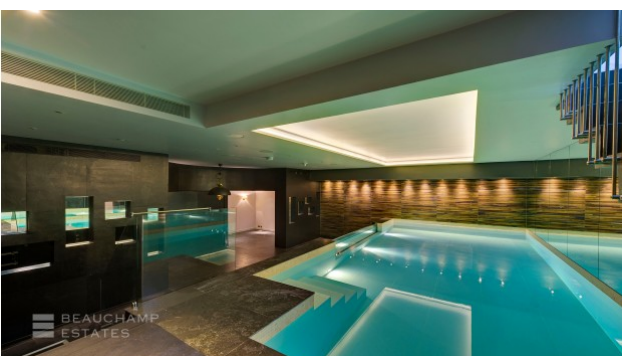
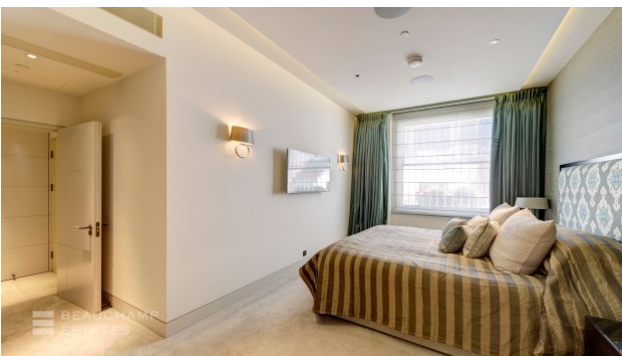
Knightsbridge, London

DISCLAIMER

Beauchamp Estates, their clients and any joint agents give notice that: 1. They are not authorised to make or give any representation or warranties in relation to the property either here or elsewhere, either on their own behalf or on behalf of their client or otherwise. They assume no responsibility for any statement that may be made in these particulars. These particulars do not form part of any offer or contract and must not be relied upon as statements or representations of fact. 2. Any Areas, measurements or distances are approximate. The text photographs and plans are for guidance only and are not necessarily comprehensive. It should not be assumed that the property has all necessary planning, building regulation or other consents and Beauchamp Estates have not tested any services, equipment or facilities. Purchasers must satisfy themselves by inspection or otherwise.

PHOTOS





FLOOR PLAN

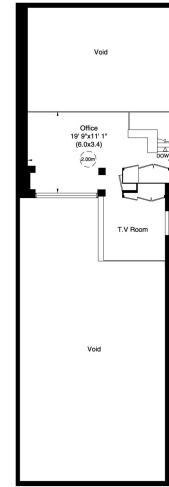
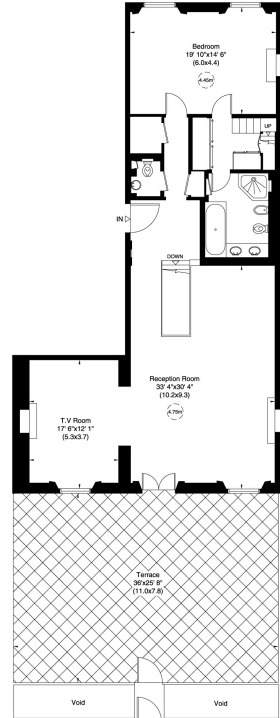
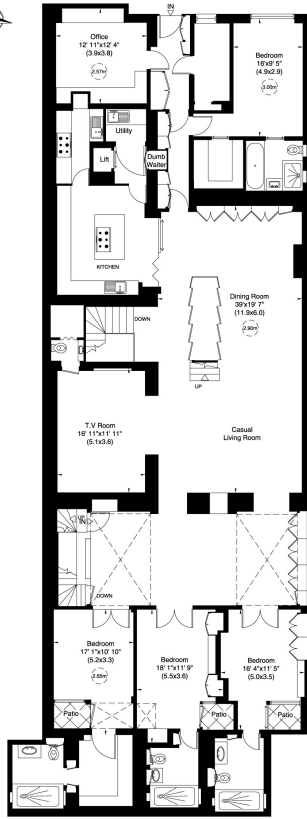
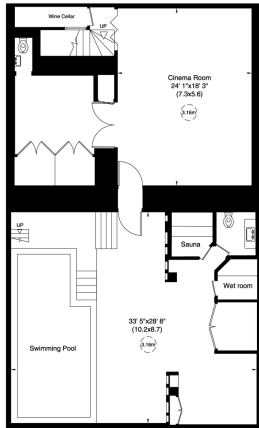
57A Princes Gate, SW7

Gross internal area (approx.)

668 Sq m (7187 Sq ft)

For identification only. Not to Scale

Floor Plans by **capital group** 020 8871 7728



Not to scale. For guidance only and must not be relied upon as a statement of fact. All measurements and areas are approximate only (and have been prepared in accordance with the current edition of the RICS Code of Measuring Practice).

[Privacy Policy page](#). To accept cookies from this site, please click the Allow button below.

Allow