

PARK LANE, W1

MAYFAIR, LONDON



KEY FEATURES

- 24 Hour concierge & security
- Housekeeping & underground parking (additional cost)

This very spacious one bedroom apartment is situated on the first floor one of Mayfair's most exclusive addresses, a renowned, portered-building on Park Lane opposite Hyde Park and next to the Dorchester Hotel.

This stylish apartment has been fully refurbished and is presented in excellent condition and benefits from a large reception room with a dining area, separate fully fitted kitchen, marble-tiled bathroom and double bedroom with built-in wardrobes.



1 BEDROOM



1 BATHROOM





ACCOMMODATION

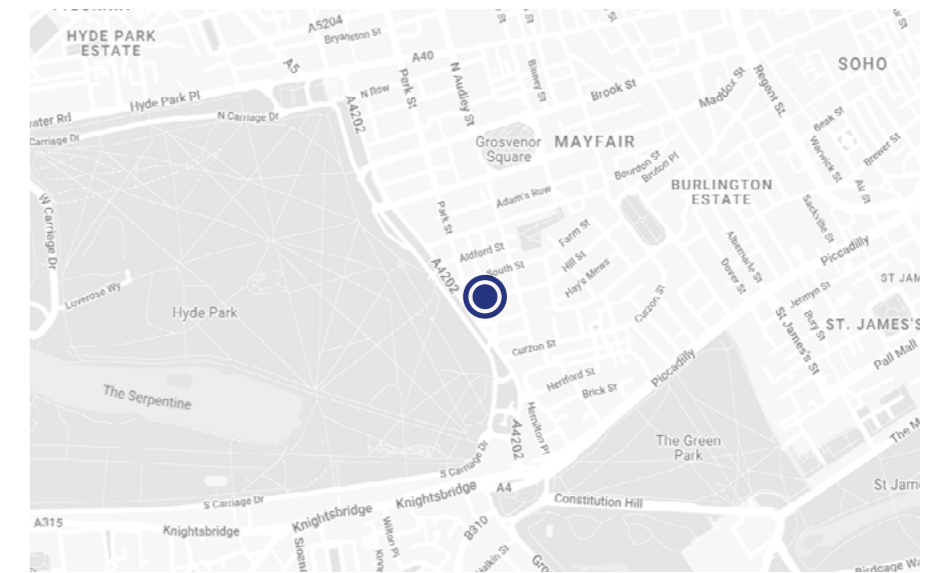
- Reception Room
- Kitchen
- Dining room
- Bedroom
- Bathroom





LOCATION

Wonderfully located opposite Hyde Park and between the Dorchester and Grosvenor House Hotels and with Mayfair on it's doorstep, 55 Park Lane is also ideally located for the Michelin-Starred restaurants, private member's clubs and designer shopping that Mayfair is world famous for with South Audley Street, Mount Street and Berkeley Square all within a short walking distance

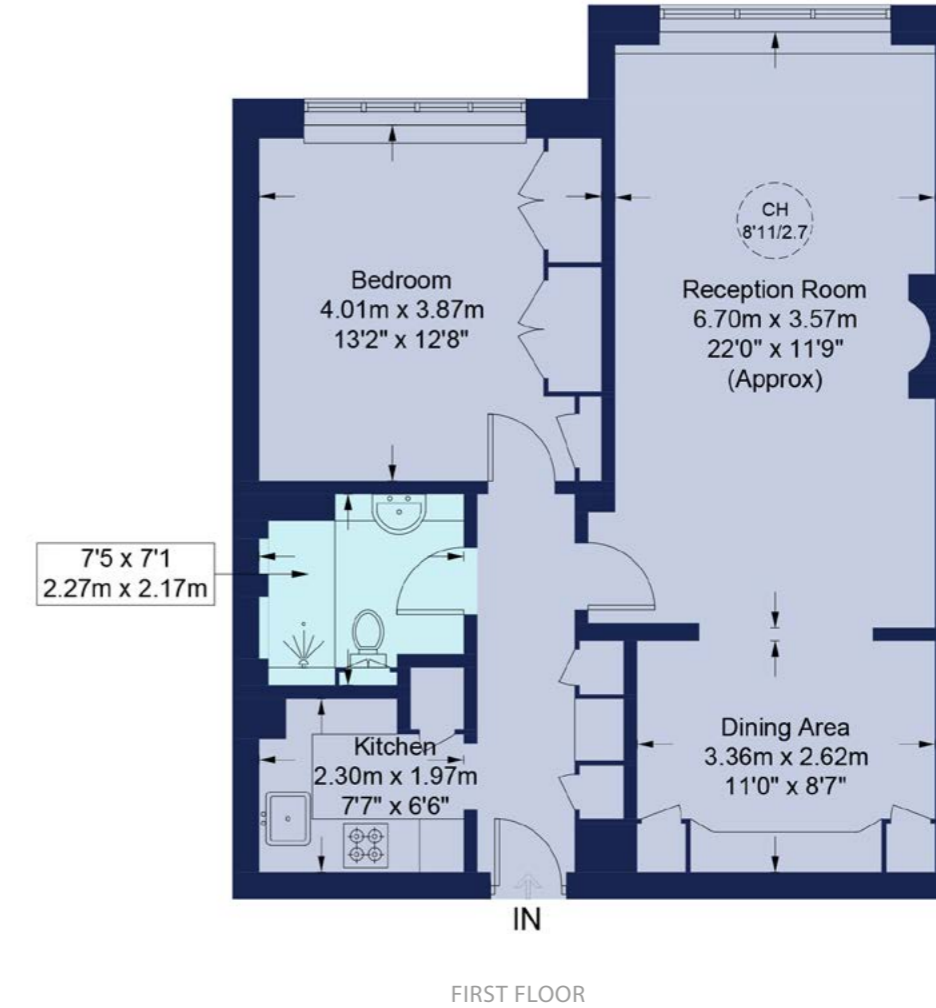




FLOORPLAN

Approx Gross Internal Area:
67.4 sq m / 725 sq ft

Not to Scale



FIRST FLOOR

TERMS

Price: £1,595,995

Tenure: Leasehold

EPC: C

Council Tax Band: G

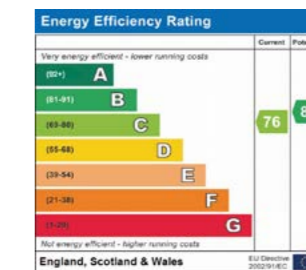
Viewing: By appointment only



MAYFAIR SALES

londonsales@beauchamp.com

+44 (0)20 7499 7722



These particulars have been produced as a general guide for this property only and no other purpose. They are not an offer or contract. You should not rely on statements in these particulars or by word of mouth or in writing as being factually accurate about the property, its condition or its value. Neither any primary agent or joint agent has any authority to make or give any representations or warranties in relation to the property, and accordingly any information given is entirely without responsibility on the part of the agents or lessor(s). The photographs show only certain parts of the property as they appeared at the time they were taken. Any areas, measurements and distances given are approximate only. Any reference to alterations to, or use of, any part of the property does not mean that any necessary planning, building regulations or other consent has been obtained nor have any services, equipment or facilities been tested. A lessee should satisfy themselves by inspection or otherwise. The VAT position relating to the property may change without notice. Please contact us for further information regarding the approved Client Money Protection (CMP) scheme and the property redress scheme which we are a member of.



BEAUCHAMP
ESTATES