

MOUNT STREET, W1

MAYFAIR, LONDON



## KEY FEATURES

- Duplex Apartment
- Gaggenau Appliances
- High Ceilings
- Period Features

Mount Street is an immaculate apartment set across two floors presenting a grand reception room with high ceilings and period features, a separate built-in kitchen and a large dining room, perfect for entertaining.

Superbly located on Mount Street in the heart of the Mayfair village this modern apartment extends to approx. 3,700 square feet. Finished to a high standard the property offers four ample sized bedrooms of which two are en-suite with dressing areas, large reception room, separate dining room, study, family snug and a laundry room. Further benefits include comfort cooling throughout and secondary glazing.

\*The reception room and dining room are as previously furnished\*



6 BEDROOM



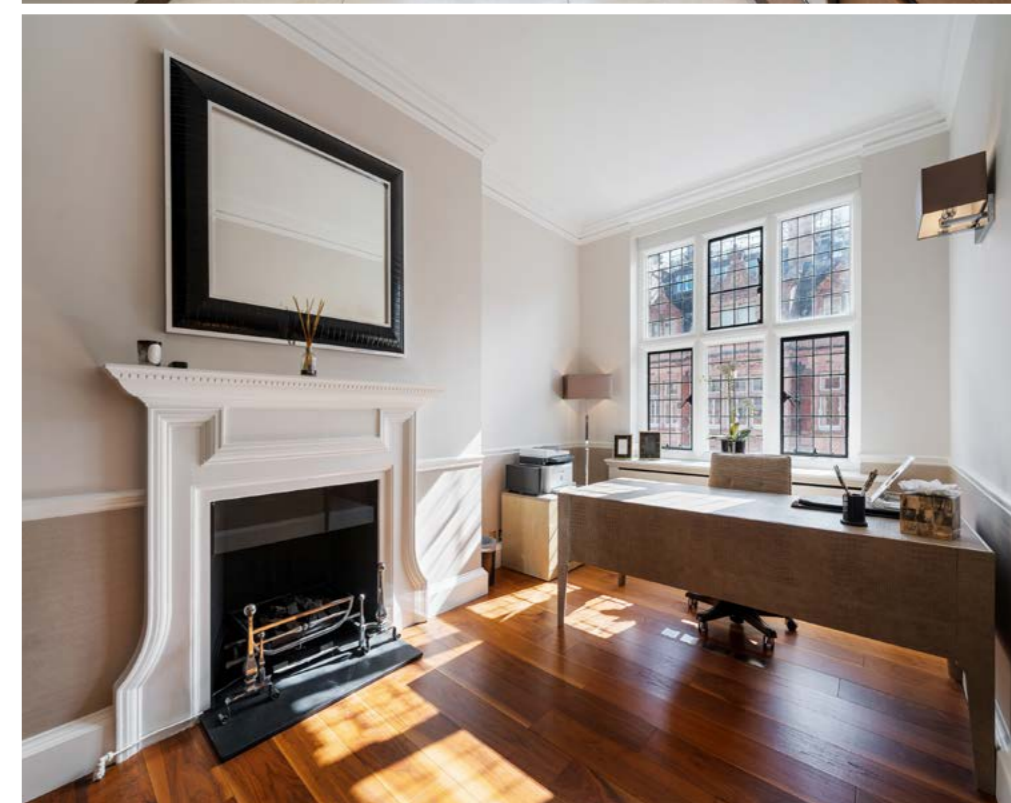
5 BATHROOM





## ACCOMMODATION

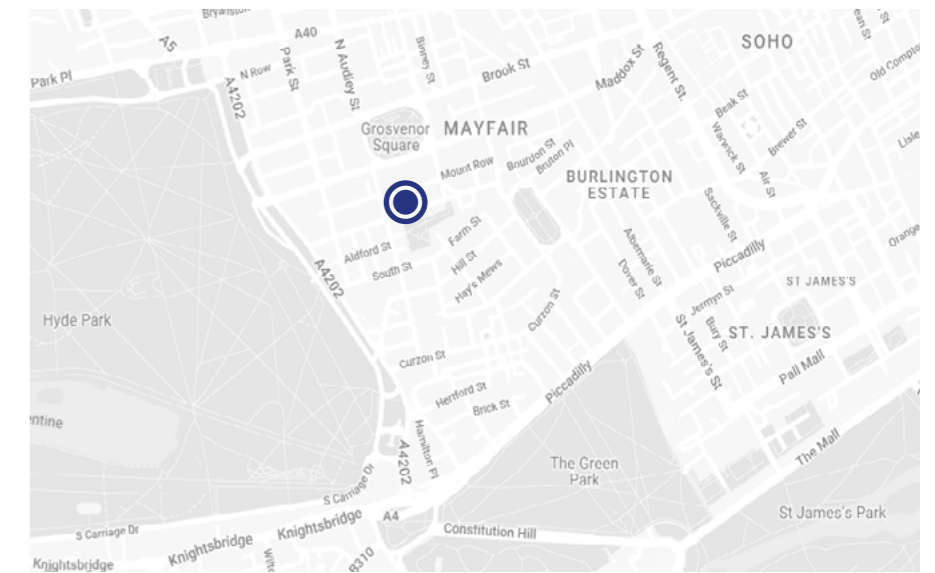
- Entrance Hall
- Reception Room
- Dining Room
- Sitting Room
- Study
- Kitchen
- Principal Suite with Dressing Room and Ensuite
- Guest Suite with Dressing Room and Ensuite
- Two Guest Bedrooms
- Bathroom
- Guest Cloakroom





## LOCATION

Located on an exclusive Mayfair street, this property is in close proximity to a wide selection of designer shops and restaurants. A short walk away is Hyde Park, one of London's top green spaces, Berkeley Square and Grosvenor Square. The apartment is situated close to Green Park Underground (Jubilee, Victoria and Piccadilly Lines), which allows direct access to the wider city.





## FLOORPLAN

Approx Gross Internal Area:  
327.7 sq m / 3527 sq ft

Not to Scale



### TERMS

Price: £5,950/week

Tenure: Leasehold

EPC: E

Council Tax Band: H

Viewing: By appointment only



MAYFAIR LETTINGS

[londonlettings@beauchamp.com](mailto:londonlettings@beauchamp.com)

+44 (0)20 7499 7722

These particulars have been produced as a general guide for this property only and no other purpose. They are not an offer or contract. You should not rely on statements in these particulars or by word of mouth or in writing as being factually accurate about the property, its condition or its value. Neither any primary agent or joint agent has any authority to make or give any representations or warranties in relation to the property, and accordingly any information given is entirely without responsibility on the part of the agents or lessor(s). The photographs show only certain parts of the property as they appeared at the time they were taken. Any areas, measurements and distances given are approximate only. Any reference to alterations to, or use of, any part of the property does not mean that any necessary planning, building regulations or other consent has been obtained nor have any services, equipment or facilities been tested. A lessee should satisfy themselves by inspection or otherwise. The VAT position relating to the property may change without notice. Please contact us for further information regarding the approved Client Money Protection (CMP) scheme and the property redress scheme which we are a member of.



BEAUCHAMP  
ESTATES