

CADOGAN GARDENS, SW1

KNIGHTSBRIDGE, LONDON



KEY FEATURES

- Patio/courtyard area
- Ideally located

A beautiful open-plan two-bedroom apartment nestled in the heart of Chelsea. Lying on the lower ground floor of a red brick and stucco Edwardian building, the lateral property is set on a prestigious garden square.

Period features, including sash windows and intricate cornicing run throughout, complementing thoughtful modern interventions, such as a bespoke kitchen and built-in storage. In the open-plan kitchen, living and dining room, a beautiful smoked mirrored splashback reflects light into the room, while an island separates the cooking space from the reception area; the island seats eight for dining comfortably. The master bedroom has views over the courtyard and bespoke wardrobes, while a second bedroom could easily be converted into a study. A lovely courtyard garden has plenty of space for a table, chairs and planters, and the house sits on Cadogan Gardens, a pretty square accessible only by residents.



2 BEDROOM



1 BATHROOM





ACCOMMODATION

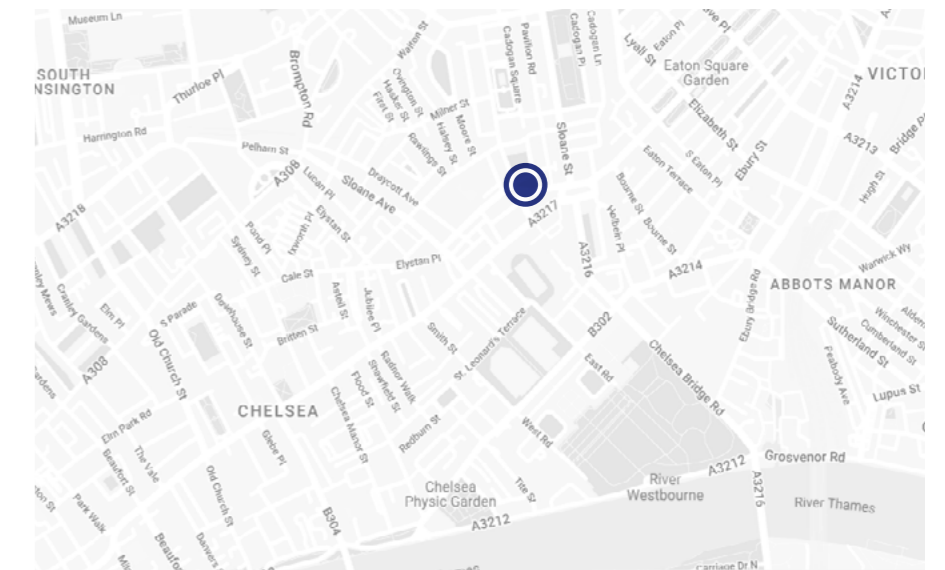
- Reception Room/Dining Room
- Kitchen
- 2 Bedrooms
- Bathroom
- Garden/patio





LOCATION

Cadogan Gardens, a pretty treelined square is ideally situated a stone's throw from Sloane Square, and the Kings Road and offers exceptional access to the surrounding shops, bars and restaurants this Prime London area is renowned for. The picturesque banks of the River Thames are also within easy reach, and transport links of Sloane Square (District & Circle Lines) and Chelsea conveniently close by for easy tube access to the rest of the city.

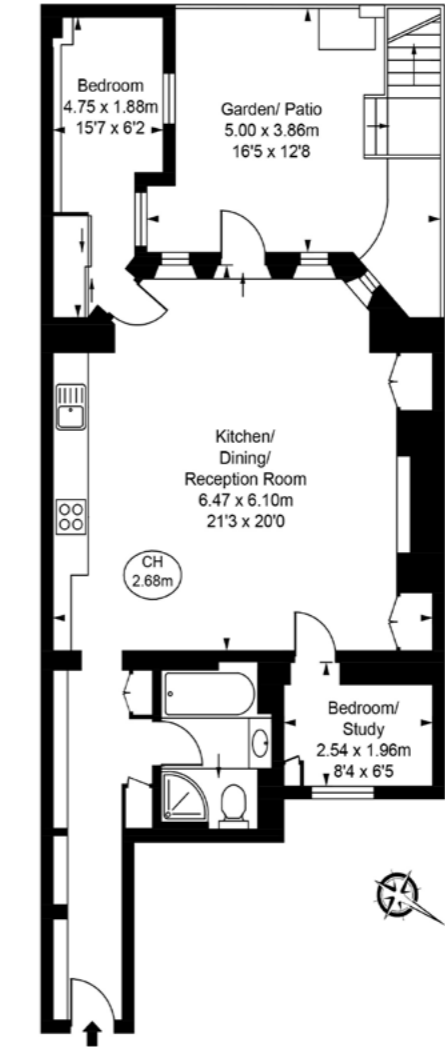




FLOORPLAN

Approx Gross Internal Area:
82.61 sq m /890 sq ft

Not to Scale



TERMS

Price: £1,850,000

Tenure: Leasehold

EPC: D

Council Tax Band: F

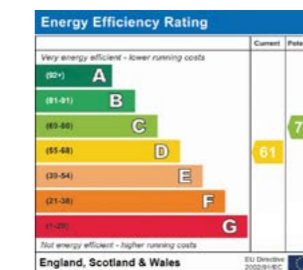
Viewing: By appointment only



MAYFAIR SALES

londonsales@beauchamp.com

+44 (0)20 7499 7722



These particulars have been produced as a general guide for this property only and no other purpose. They are not an offer or contract. You should not rely on statements in these particulars or by word of mouth or in writing as being factually accurate about the property, its condition or its value. Neither any primary agent or joint agent has any authority to make or give any representations or warranties in relation to the property, and accordingly any information given is entirely without responsibility on the part of the agents or lessor(s). The photographs show only certain parts of the property as they appeared at the time they were taken. Any areas, measurements and distances given are approximate only. Any reference to alterations to, or use of, any part of the property does not mean that any necessary planning, building regulations or other consent has been obtained nor have any services, equipment or facilities been tested. A lessee should satisfy themselves by inspection or otherwise. The VAT position relating to the property may change without notice. Please contact us for further information regarding the approved Client Money Protection (CMP) scheme and the property redress scheme which we are a member of.



BEAUCHAMP
ESTATES