

CHIMES

WESTMINSTER



Luxury that transcends time



T I M E L E S S S T Y L E

Situated in the heart of Westminster, Chimes is an exclusive collection of one, two and three bedroom apartments, offering a convivial and sophisticated city lifestyle. Designed by award-winning architects, it offers luxurious homes with a wealth of including: roof terrace,

gym, cinema room and guest suite. Close to the River Thames, Palace of Westminster and St. James's Park, Chimes is just moments from the great icons of London, putting you at the centre of political and cultural life.



Big Ben

LIVE WITHIN THE SOUND OF BIG BEN



Buckingham Palace

Westminster is one of London's most famous districts, with grand monuments and public buildings at almost every turn. It is also home to quiet residential streets, peaceful garden squares and some of London's best and most inventive restaurants.

Living at Chimes gives you the opportunity to embrace London life to the full. You are walking distance from world-class cultural institutions such as The National Gallery, London Coliseum and Royal Opera House; the theatres of Covent Garden and Piccadilly; and the shopping of St. James's, Regent Street and Bond Street.

Or for walks through acres of green and past flower beds of colourful abundance, the open spaces of St. James's Park, Green Park and Hyde Park are all close by.





Houses of Parliament

You are also just minutes from the River Thames, the life blood of the city. A riverside walk along Millbank will take you to Parliament Square, where pubs such as the Westminster Arms and St Stephen's Tavern are renowned as the haunts of politicians and journalists.



The London Eye and Westminster Abbey



The Tate Britain

When it comes to dining out, shopping, and exploring London's vast cultural scene, you could not be better placed. You'll find restaurants, delis, cafés food stores and shops all just a leisurely stroll from your front door. Westminster and its surrounding neighbourhoods of Mayfair, Belgravia and Chelsea are home to some of London's finest dining establishments, with numerous Michelin stars bestowed upon them.

London is one of the greenest cities in the world with thousands of parks, gardens, squares and green spaces. Living at Chimes means you are only a walk away from some of the capital's most famous parks, as well as hidden pockets of tranquil green.



Overlooking Buckingham Palace from St. James's Park



St James's Park

Lined with quintessential London Plane trees, St John's Gardens is an attractive garden square on Horseferry Road. For larger expanses of green, you can stroll through the streets of Westminster up to St. James's Park, with its picturesque lake, dazzling floral displays and views of London monuments emerging above the trees.

Across the Mall, paths lead you into Green Park, a peaceful stretch of grassland sheltered by mature trees, which comes to brilliant life in spring with its mass of daffodils. These two royal parks give you a delightful green corridor all the way up to Piccadilly, a particularly enjoyable journey into the West End.



St John's Garden



The Queen Victoria Memorial

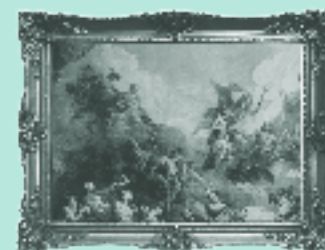
TIMELESS CULTURE

1703



Buckingham Palace was built and the first monarch to live there was Queen Victoria in 1837

1897



Tate Britain opens on 21 July 1897

2022



Queen's Platinum Jubilee

1868



London Victoria station opens on 24 December 1868

1965



The City of Westminster was created from Westminster, Paddington and St Marylebone

1906



The Victoria Memorial is erected in March 1906

1952



Queen Elizabeth II succeeded to the Throne on the 6th February 1952

1859



Big Ben first rings across Westminster on 31 May 1859

1862

Westminster Bridge opened on the 25 May 1862



WESTMINSTER
HERITAGE



The River Thames

TIMELESS LOCATION

As you walk around leafy Vincent Square or along quiet residential streets, it is easy to forget how centrally located Chimes is. Living in Westminster puts so much of London within easy reach, whether you are walking, taking the tube or travelling by car.

Lambeth Bridge

Vincent Square

Capsicum Deli

CHIMES
WESTMINSTER

The Cinnamon Club

Houses of Parliament

Curzon Victoria

Westminster Abbey

St. James's Park Station

Churchill War Rooms

Buckingham Palace

10 Downing Street

St. James's Park





Retail and Restaurants

Curzon Victoria

6 mins

The Cinnamon Club

7 mins

Selfridges

22 mins

Hotels and Clubs

Conrad London St. James

9 mins

London Skybar at Altitude

11 mins

Transport

St. James's Park Underground

6 mins

Victoria Station

7 mins

Green space and Sports

St. James's Park

9 mins

Queen Mother Sports Centre

10 mins

Attractions

Houses of Parliament

14 mins

Buckingham Palace

13 mins

River Thames

10 mins

Step outside your apartment and enjoy all
your favourite amenities within minutes

Travel timings are approximate and are taken from [google.com/maps](https://www.google.com/maps)



EATING AND DRINKING

Whether you're dining out, meeting friends for coffee or you just want to relax over a leisurely weekend breakfast, there's plenty to choose from in and around the Westminster area.





TIMELESS LUXURY

Chimes is a new development in keeping with the architectural richness of its historic surroundings. Award-winning architects Mae have created a sense of distinguished seclusion, hidden from view on Horseferry Road, in London's most prestigious neighbourhood. The building is beautifully designed with tiered top, middle and bottom green-glazed brick work. The façade comprises champagne-bronze metalwork and full bay windows, which welcome light from their north-east facing position.

CONCIERGE

On entering Chimes you will find yourself in the reception area, with a concierge desk that is staffed 24 hours a day.

The reception area, leads on to the communal lounge for you and your guests. From here, one of the four fast lifts will take you up to your home.



BUSINESS SUITE

Kitted out with the latest superfast broadband connection and private desk space, the Business Suite will enable homeowners not only to be neighbours at home, but also in a work setting too.

RESIDENTS' LOUNGE

The open-plan lounge is the ideal place to start the day with a coffee, or enjoy a glass of wine in the evening. The elegant glass conservatory doors which opens out onto the courtyard, offering beautifully framed views of the greenery. Homeowners will also have access to a small kitchenette, where you can entertain friends and family outside of your apartment.



SCREENING ROOM

Take your movie nights to the next level, where the cosy eight-seater screening room is bookable day or night. With high quality built in surround sound, satellite TV, plush comfortable chairs and dim lighting to add glamour.

COURTYARD

At the centre of Chimes is the courtyard, grounding the development around a calming green space with trees, foliage and fragrant planting. The courtyard is a serene and inviting haven to relax and unwind in when you need to recharge.



GYM AND STRETCH STUDIO

Located on the ground floor, the gym is fitted with hand weights, workout machines and full height mirrors. In the stretch studio you'll find a barre bar, pilates and yoga equipment so you can challenge your body in different ways, helping you to achieve optimal fitness and wellbeing.

GUEST SUITE

Your visiting friends or family may wish to stay overnight. Speak to the concierge if you'd like to book the suite. The guest suite comprises comfortable sleeping arrangements and an en-suite.





ROOF TERRACE

The roof terrace at Chimes is, quite literally, the pinnacle of this development. You'll catch your breath as you step out onto the terrace and take in the glorious views over iconic Westminster landmarks. It is the perfect place to soak up the lively atmosphere of central London from a place of tranquillity, enjoying a glass of wine in the company of friends, or simply watching the world go by.



TIMELESS LUXURY

Apartments

LIVING ROOMS

The living space is a perfect clean canvas in which to create a unique home, with white linen painted ceilings and walls, skirting shadow gaps in a white finish. The living space is complete with a five amp lighting circuit, data and telephone points.



KITCHENS

The bespoke fully-fitted kitchens with Davos Oak cabinets and Quartz worktops, each homes come with integrated appliances by Miele, including a ceramic induction hob, oven and microwave, dishwasher and fridge-freezer.



BEDROOMS

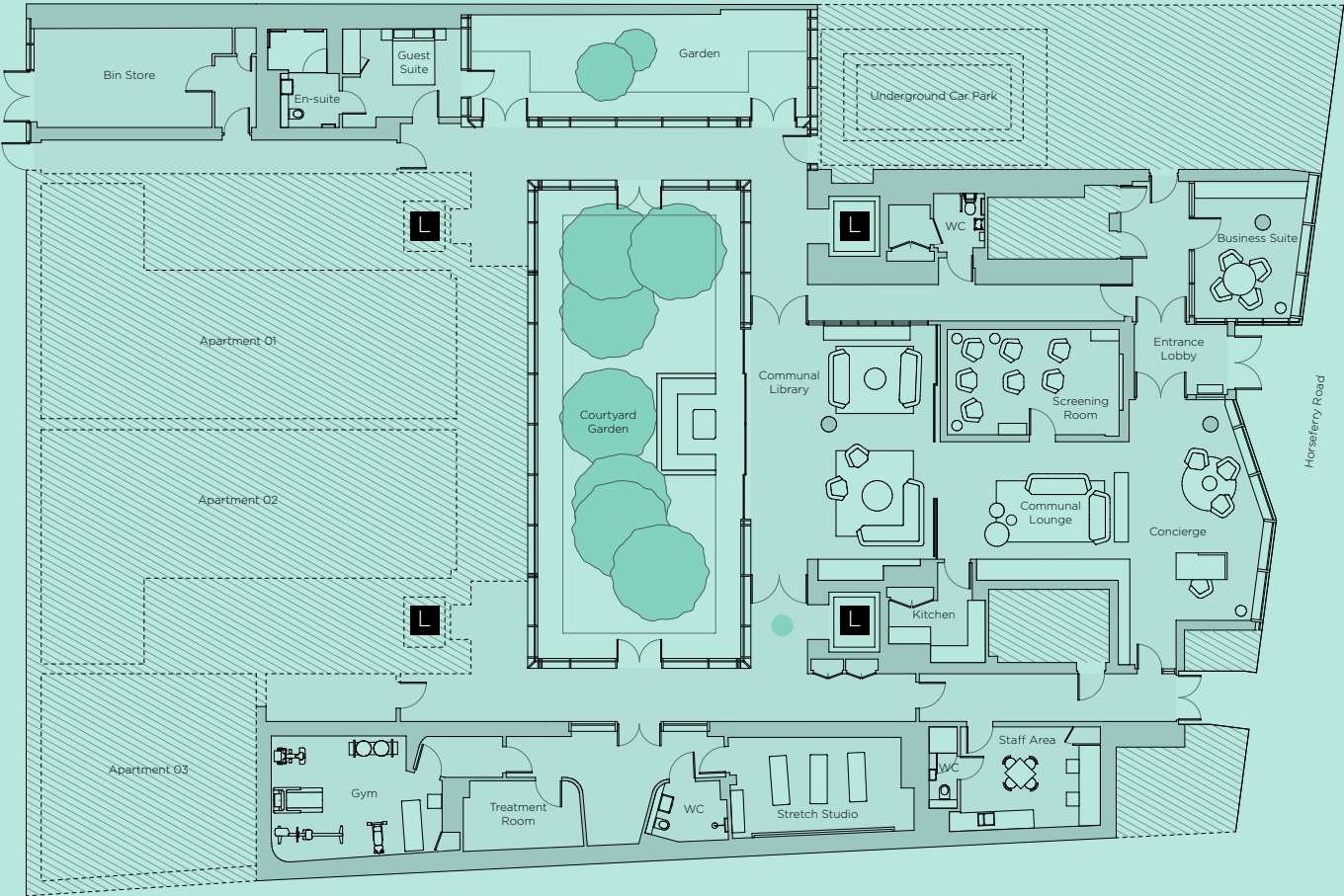
The bedrooms are a cosy, comfortable haven with a telephone and data points. The principal bedrooms feature a full-height fitted wardrobe.

BATHROOMS

The bathroom combines modern design with spacious luxury. The family bathroom feature a white steel bath, glass shower screen, whilst en-suites feature a walk-in glass shower enclosure. Both bathrooms have a Caesarstone worktop, Porcelain floor tiles and cabinet storage, providing a contemporary aesthetic while a fixed shower head and under-floor heating, offer practical, everyday opulence.

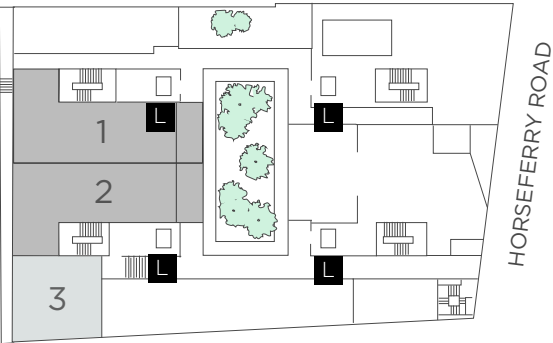


SITE PLAN

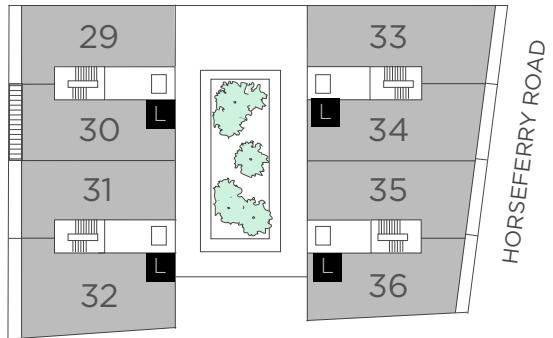


Built around a tranquil central courtyard, the two equal-height six-storey blocks are split into four quarters, reflecting Big Ben’s call at the quarter of each hour. The interior of Chimes is as distinctive as the exterior. Apartments are filled with light and generously proportioned, while the communal spaces open out onto the lush green courtyard through fully glazed doors. Bespoke design details and refined finishes create calm and contemporary spaces which cocoon you from the buzz of the city.

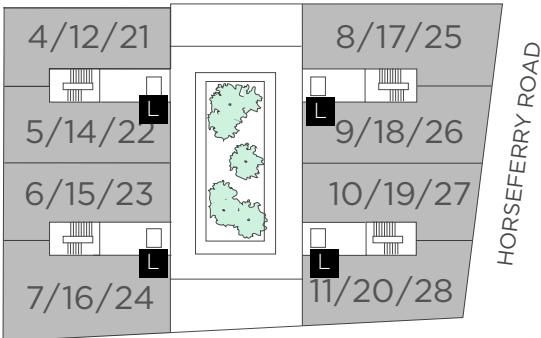
GROUND FLOOR



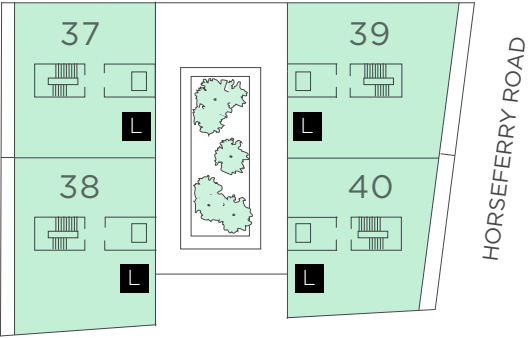
FOURTH FLOOR



FIRST/SECOND/THIRD FLOORS



FIFTH FLOOR



- 1 Bedroom
- 2 Bedrooms
- Penthouses
- L Lifts

TIMELESS
QUALITY

KITCHEN

- Custom designed fully fitted kitchen with cabinets made from Davos Oak with matt painted frontals and softclose doors
- Babel frontals with Venato White Quartz work surfaces and splashbacks
- Babel frontals with Calacatta Gold Quartz work surfaces and splashbacks in the Penthouses
- Bristan 3-in-1 rapid boiling hot water mixer tap with stainless steel sink
- Ceramic electric/induction hob with onset controls and stainless steel slimline cooker hood by Miele
- Built in stainless steel oven with moisture plus or stainless steel combination oven with microwave by Miele
- Fully integrated stainless steel warming drawers by Miele
- Full height integrated fridge/freezer by Miele
- Fully integrated multifunction dishwasher by Miele
- Built in under-counter wine cabinet
- Free standing front loading washer/dryer by Miele
- Space saving pull out suspended recycling bins

BATHROOM

- Full height porcelain tiles to shower and bath walls finished in Mineral
- Caesarstone bathroom worktops and splashbacks in Statuario Nuvo finish
- Porcelain floor tiles in Absolute Mineral finish
- Mirrored cabinet with glass shelving and shaver socket
- Recessed LED round downlights
- Kaldewei bath anti-slip with Ionic panel hinged bath screen – Hansgrohe shower over bath in some apartments
- Thermostatic wall mounted chrome bath/shower control
- Hansgrohe chrome shower with hand shower
- Duravit Starck semi recessed basin
- Duravit Starck soft close dual flush WC
- Polished chrome Vogueladder style, thermostatically controlled heated towel rail to bathrooms/shower rooms
- Extract ventilation

INTERIOR FINISHES

- Timber Fendi European Oak flooring with UV oiled finish in herringbone pattern in kitchen, living areas and hallways
- Fitted wool blend Westend Velvet carpet in Mushroom in bedrooms
- Built-in wardrobe to principal bedroom
- Double glazed windows
- Matt router double square interior doors
- Polished chrome door handles throughout apartments

ELECTRICALS

- Recessed LED round downlights throughout apartments
- Automatic lighting to utility and storage cupboards
- Spotlights in apartments with balconies
- 5 amp lighting circuit to reception room and bedrooms
- Television (Freeview terrestrial, Sky, Freesat, FM points) to principal rooms and bedroom
- Telephone and data points to principal reception room and bedroom
- Brushed chrome power sockets and light switches

HEATING/COOLING

- Heating and hot water from a communal system with metered water / electric supply to all apartments
- Underfloor heating throughout apartments with thermostats in each room
- Air conditioning to all apartments

SECURITY

- IP Room Unit with secure video entry system and ability to raise alarm calls
- 24-hour concierge service and monitored CCTV
- All apartments provided with mains supply smoke detectors and fitted with Rapidrop RD208 residential sprinkler with white cover plates – cold water boosted supply
- Multi-point locking, door restrictor and spy hole to apartment entrance doors

CAR PARKING

- Secure underground parking is available.*

PEACE OF MIND

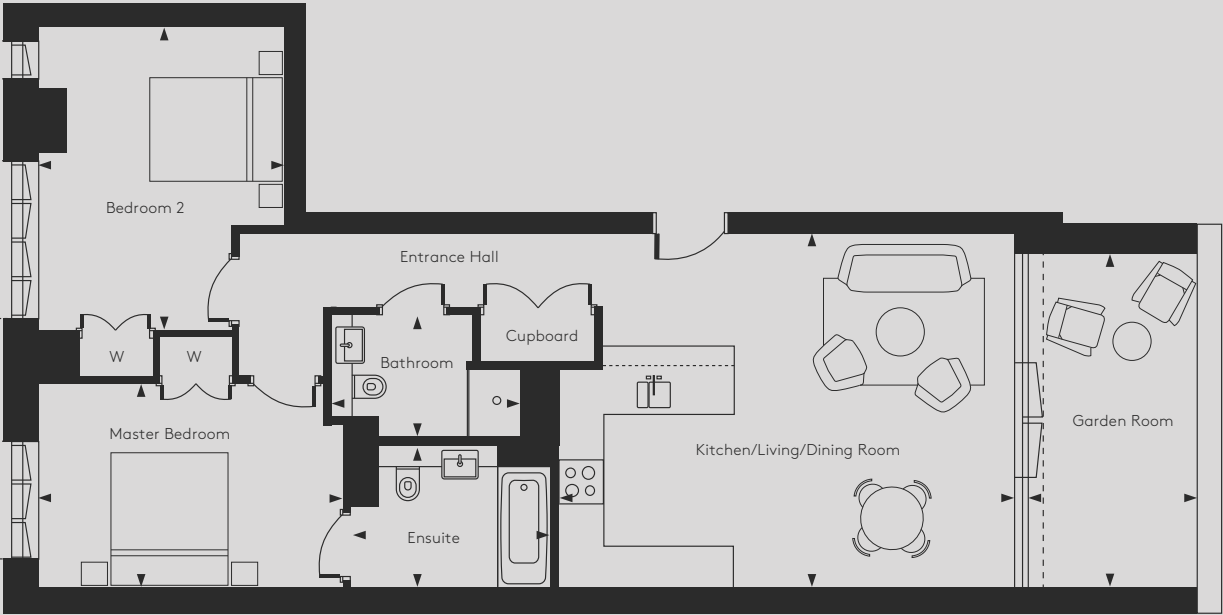
- 999 year lease
- All apartments benefit from a 10-year Premier Guarantee build warranty

OWNERS’ AMENITIES

- Stretch studio with barre and equipment
- Gymnasium
- Screening room
- Changing rooms with shower facilities
- Communal lounge
- Guest Suite
- Conservatory
- Rooftop terrace
- Business Suite

APARTMENT 1

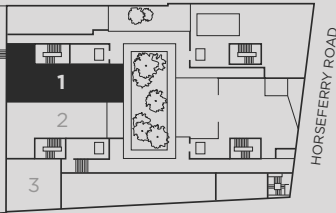
Two Bedrooms
Ground Floor



Dimensions

Kitchen / Living / Dining Room	22’ 5” x 17’ 5”	6832 mm x 5308 mm
Master Bedroom	14’ 11” x 10’ 0”	4546 mm x 3048 mm
Ensuite	9’ 10” x 6’ 11”	2997 mm x 2108 mm
Bedroom 2	12’ 1” x 14’ 10”	3683 mm x 4521 mm
Bathroom	9’ 2” x 6’ 0”	2794 mm x 1828 mm
Garden Room	8’ 4” x 16’ 5”	2540 mm x 5003 mm
Total Area	997 sq ft	93 sq m

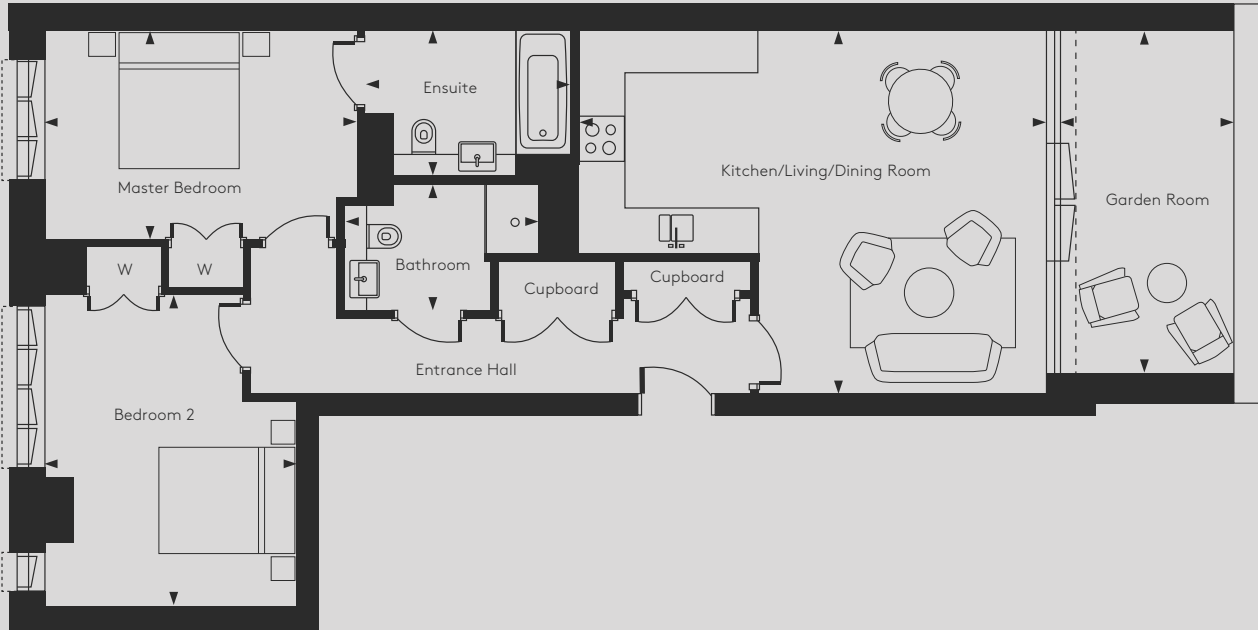
Ground Floor



*Please speak to our sales advisors for more information.

APARTMENT 2

Two Bedrooms
Ground Floor



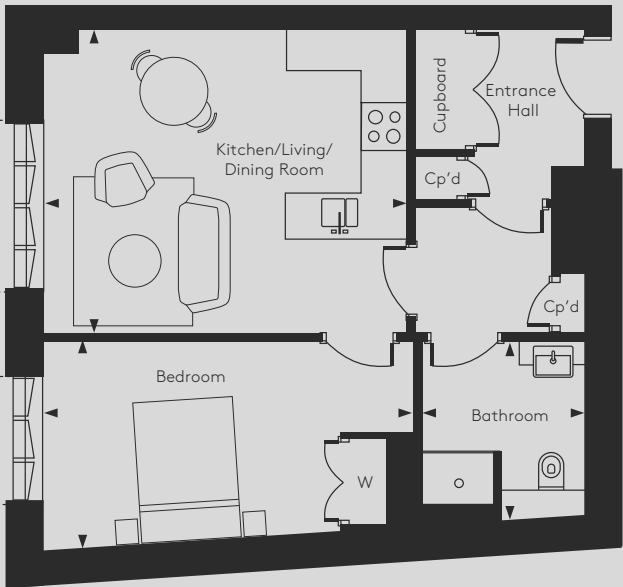
Dimensions		
Kitchen / Living / Dining Room	22' 5" x 17' 5"	6832 mm x 5308 mm
Master Bedroom	14' 11" x 10' 0"	4546 mm x 3048 mm
Ensuite	9' 10" x 6' 11"	2997 mm x 2108 mm
Bedroom 2	12' 1" x 14' 10"	3683 mm x 4521 mm
Bathroom	9' 2" x 6' 0"	2794 mm x 1828 mm
Garden Room	8' 4" x 16' 5"	2540 mm x 5003 mm
Total Area	997 sq ft	93 sq m

Ground Floor



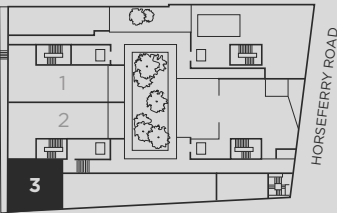
APARTMENT 3

One Bedroom
Ground Floor



Dimensions		
Kitchen / Living / Dining Room	16' 10" x 14' 2"	5138 mm x 4318 mm
Bedroom	17' 2" x 9' 9"	5232 mm x 2971 mm
Bathroom	7' 7" x 8' 3"	2311 mm x 5514 mm
Total Area	606 sq ft	56 sq m

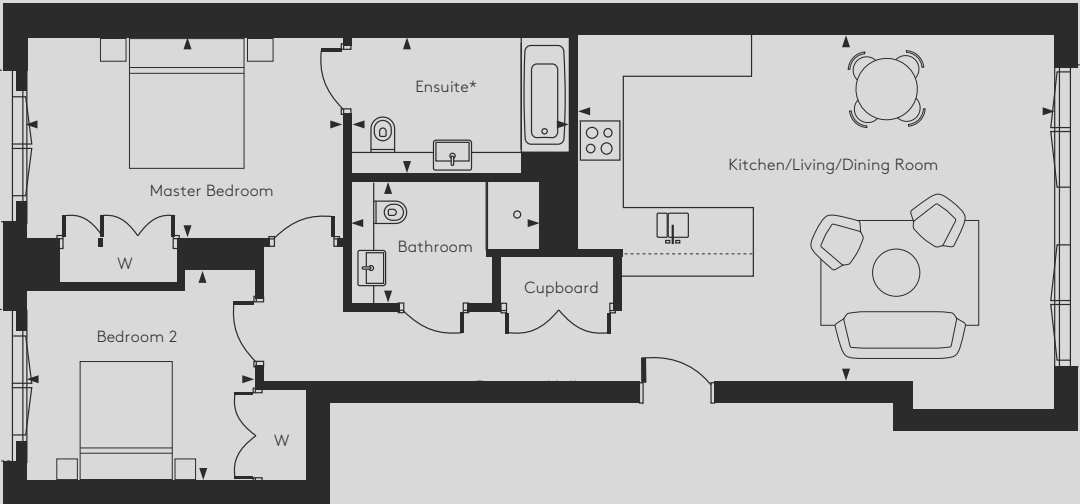
Ground Floor



APARTMENT 4/12/21

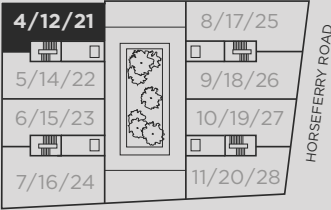


Two Bedrooms
First / Second /
Third Floors



Dimensions		
Kitchen / Living / Dining Room	23' 3" x 17' 5"	7086 mm x 5308 mm
Master Bedroom	15' 7" x 10' 0"	4749 mm x 3048 mm
Ensuite	10' 9" x 6' 11"	3276 mm x 2108 mm
Bedroom 2	11' 3" x 9' 4"	3429 mm x 2844 mm
Bathroom	9' 2" x 6' 0"	2794 mm x 1828 mm
Total Area	939 sq ft	87 sq m

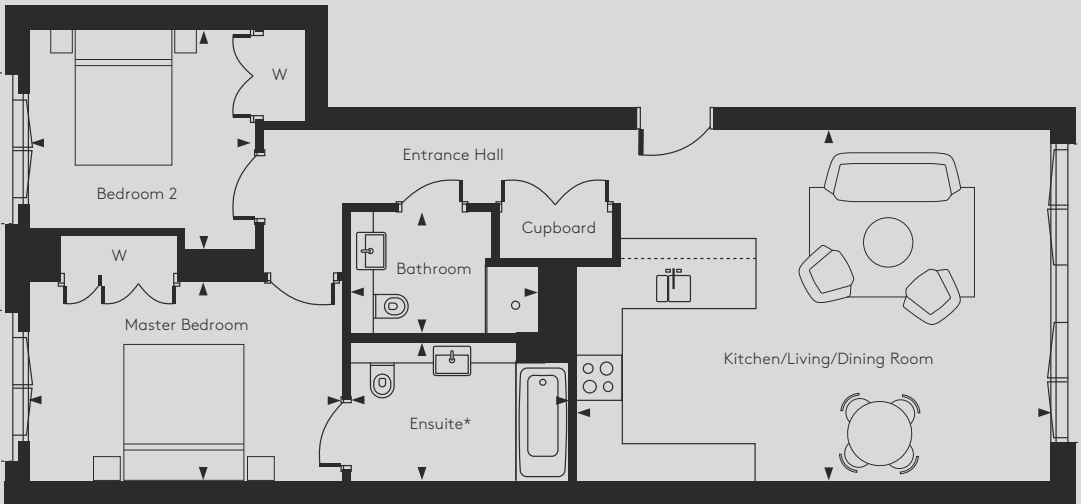
First/Second/Third Floors



APARTMENT 5/14/22

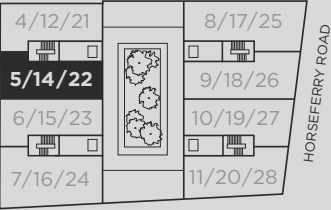


Two Bedrooms
First / Second /
Third Floors



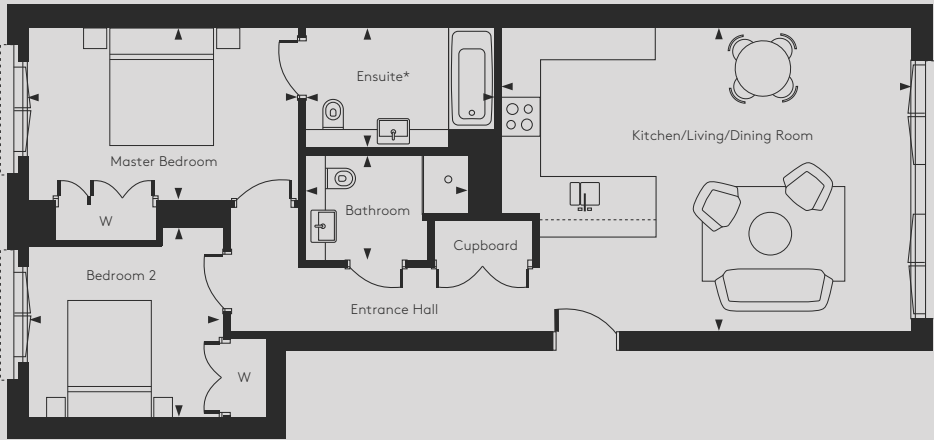
Dimensions		
Kitchen / Living / Dining Room	23' 3" x 17' 5"	7086 mm x 5308 mm
Master Bedroom	15' 7" x 10' 0"	4749 mm x 3048 mm
Ensuite	10' 9" x 6' 11"	3276 mm x 2108 mm
Bedroom 2	11' 3" x 10' 10"	3429 mm x 3302 mm
Bathroom	9' 2" x 6' 0"	2794 mm x 1828 mm
Total Area	948 sq ft	88 sq m

First/Second/Third Floors



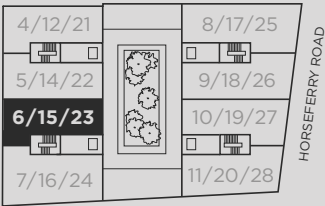
APARTMENT 6/15/23

Two Bedrooms
First / Second /
Third Floors



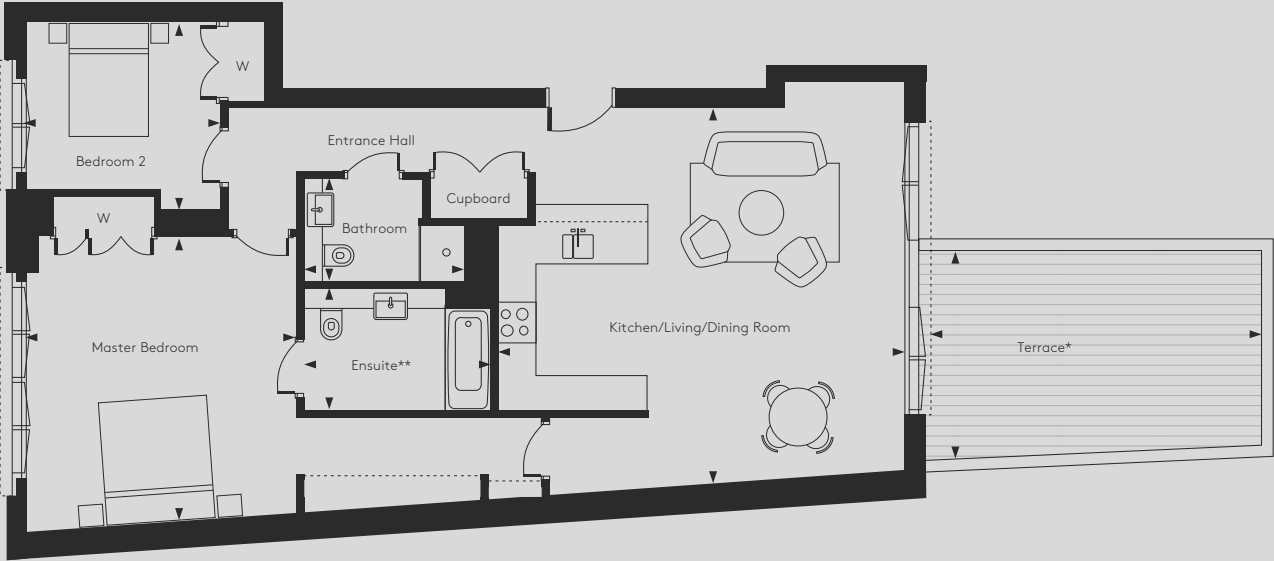
Dimensions		
Kitchen / Living / Dining Room	23' 3" x 17' 5"	7086 mm x 5308 mm
Master Bedroom	15' 7" x 10' 0"	4749 mm x 3048 mm
Ensuite	10' 9" x 6' 11"	3276 mm x 2108 mm
Bedroom 2	11' 3" x 10' 10"	3429 mm x 3302 mm
Bathroom	9' 2" x 6' 0"	2794 mm x 1828 mm
Total Area	948 sq ft	88 sq m

First/Second/Third Floors



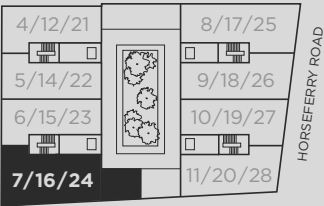
APARTMENT 7*/16/24

Two Bedrooms
First / Second /
Third Floors



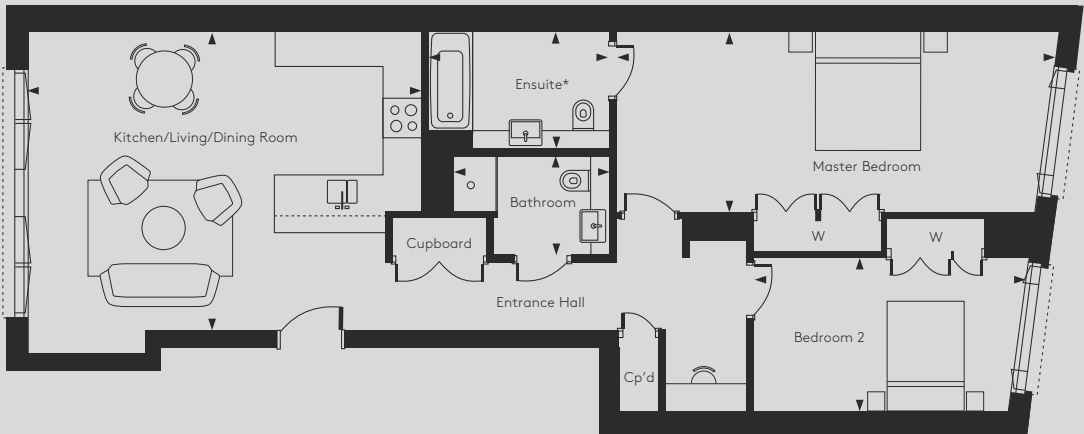
Dimensions		
Kitchen / Living / Dining Room	23' 3" x 21' 11"	7086 mm x 6680 mm
Master Bedroom	15' 7" x 17' 0"	4749 mm x 5181 mm
Ensuite	10' 9" x 6' 11"	3276 mm x 2108 mm
Bedroom 2	11' 3" x 10' 10"	3429 mm x 3302 mm
Bathroom	9' 2" x 6' 0"	2794mm x 1828 mm
Terrace*	19' 4" x 12' 1"	5892 mm x 3683 mm
Total Area	1231 sq ft	114 sq m

First/Second/Third Floors



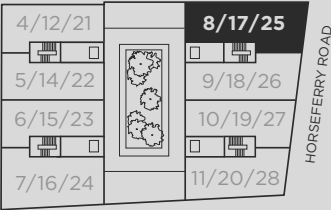
APARTMENT 8/17/25

Two Bedrooms
First / Second /
Third Floors



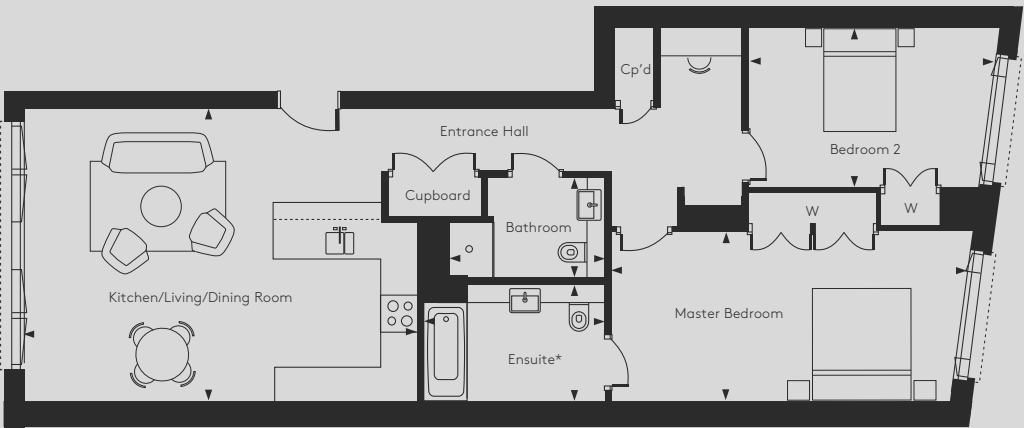
Dimensions		
Kitchen / Living / Dining Room	23' 3" x 17' 5"	7086 mm x 5308 mm
Master Bedroom	26' 4" x 10' 10"	8026 mm x 3302 mm
Ensuite	10' 9" x 6' 11"	3276 mm x 2108 mm
Bedroom 2	16' 5" x 9' 2"	5003 mm x 2794 mm
Bathroom	9' 2" x 6' 0"	2794 mm x 1828 mm
Total Area	1208 sq ft	112 sq m

First/Second/Third Floors



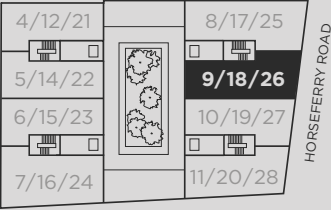
APARTMENT 9/18/26

Two Bedrooms
First / Second /
Third Floors



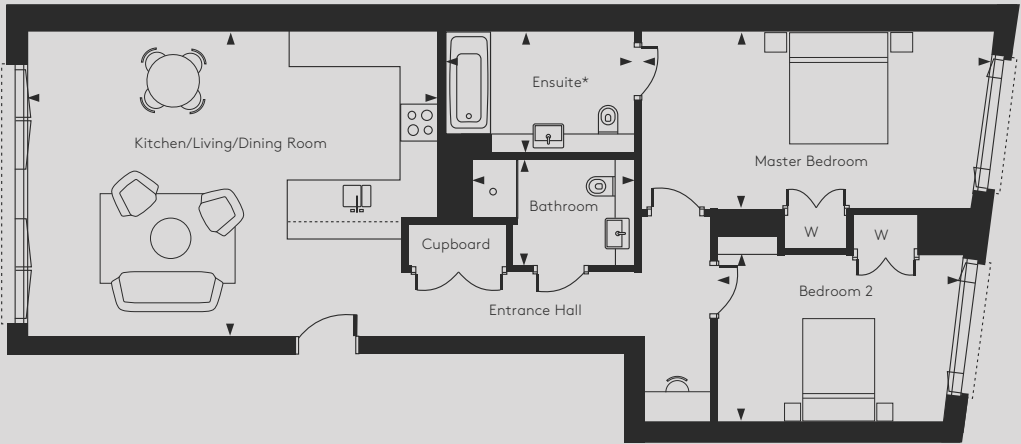
Dimensions		
Kitchen / Living / Dining Room	23' 3" x 17' 5"	7086 mm x 5308 mm
Master Bedroom	21' 7" x 10' 2"	6578 mm x 3098 mm
Ensuite	10' 9" x 6' 11"	3276 mm x 2108 mm
Bedroom 2	15' 0" x 9' 6"	4572 mm x 2895 mm
Bathroom	9' 2" x 6' 0"	2794 mm x 1828 mm
Total Area	1107 sq ft	103 sq m

First/Second/Third Floors



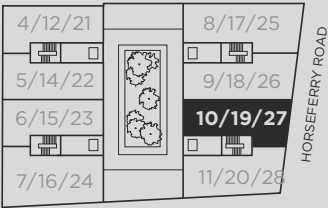
APARTMENT 10/19/27

Two Bedrooms
First / Second /
Third Floors



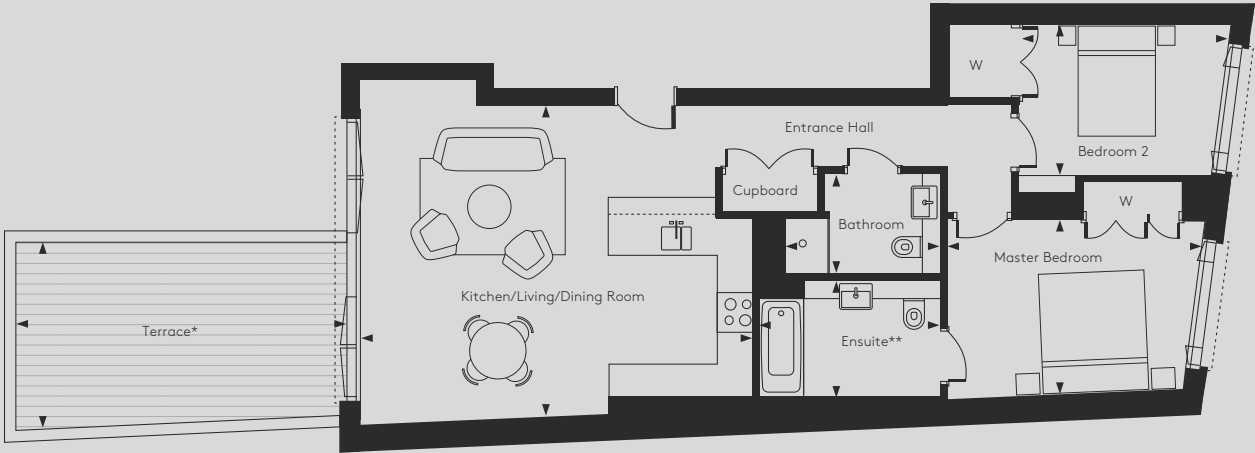
Dimensions		
Kitchen / Living / Dining Room	23' 3" x 17' 5"	7086 mm x 5308 mm
Master Bedroom	20' 2" x 10' 2"	6146 mm x 3098 mm
Ensuite	10' 9" x 6' 11"	3276 mm x 2108 mm
Bedroom 2	14' 1" x 9' 6"	4292 mm x 2895 mm
Bathroom	9' 2" x 6' 0"	2794 mm x 1828 mm
Total Area	1039 sq ft	97 sq m

First/Second/Third Floors



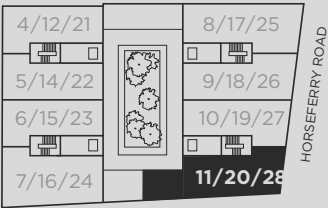
APARTMENT 11*/20/28

Two Bedrooms
First / Second /
Third Floors



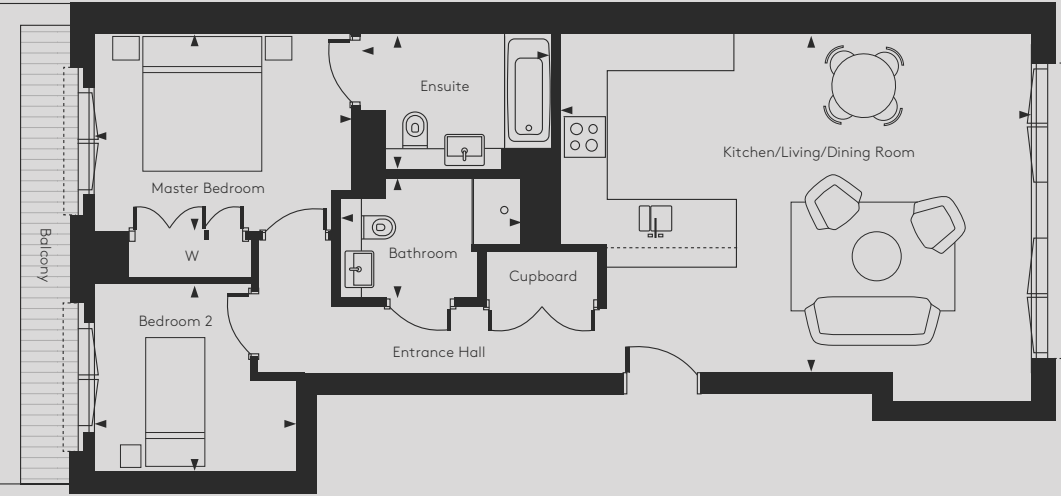
Dimensions		
Kitchen / Living / Dining Room	23' 3" x 19' 2"	7086 mm x 5842 mm
Master Bedroom	15' 6" x 10' 10"	4724 mm x 3302 mm
Ensuite	10' 9" x 6' 11"	3276 mm x 2108 mm
Bedroom 2	12' 9" x 9' 0"	6886 mm x 2743 mm
Bathroom	9' 2" x 6' 0"	2794 mm x 1828 mm
Terrace*	19' 4" x 11' 2"	5892 mm x 3403 mm
Total Area	1017 sq ft	95 sq m

First/Second/Third Floors

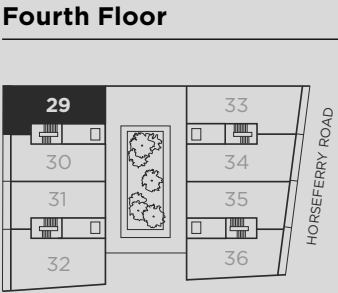


APARTMENT 29

Two Bedrooms
Fourth Floor

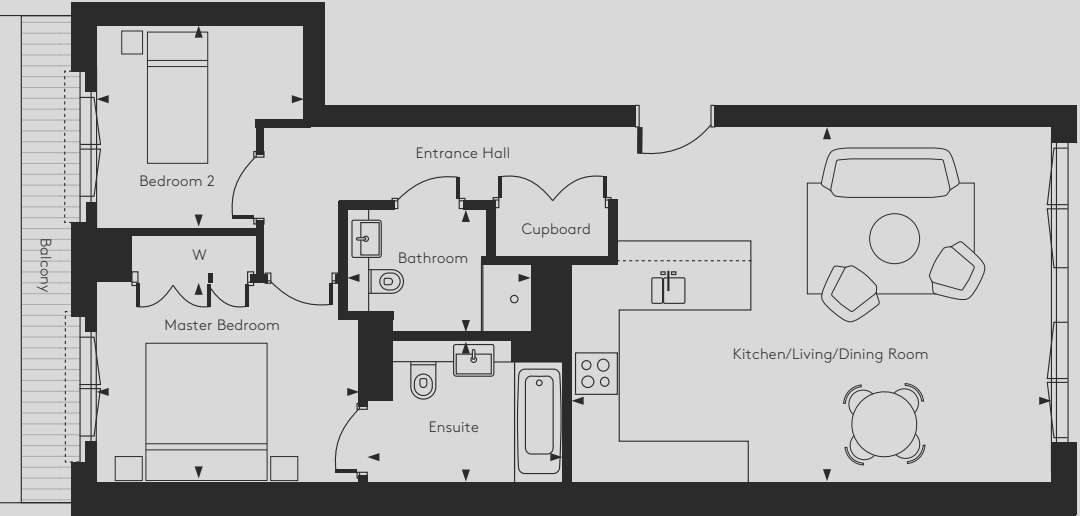


Dimensions		
Kitchen / Living / Dining Room	23' 3" x 17' 5"	7086 mm x 5308 mm
Master Bedroom	13' 0" x 9' 11"	3962 mm x 3022 mm
Ensuite	9' 10" x 6' 11"	2997 mm x 2108 mm
Bedroom 2	9' 5" x 10' 1"	2870 mm x 3073 mm
Bathroom	9' 2" x 6' 0"	2794 mm x 1828 mm
Total Area	859 sq ft	80 sq m

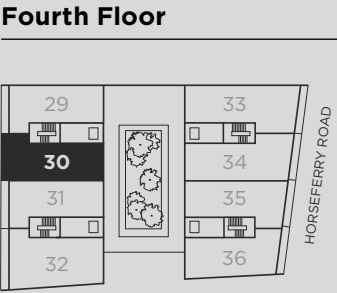


APARTMENT 30

Two Bedrooms
Fourth Floor

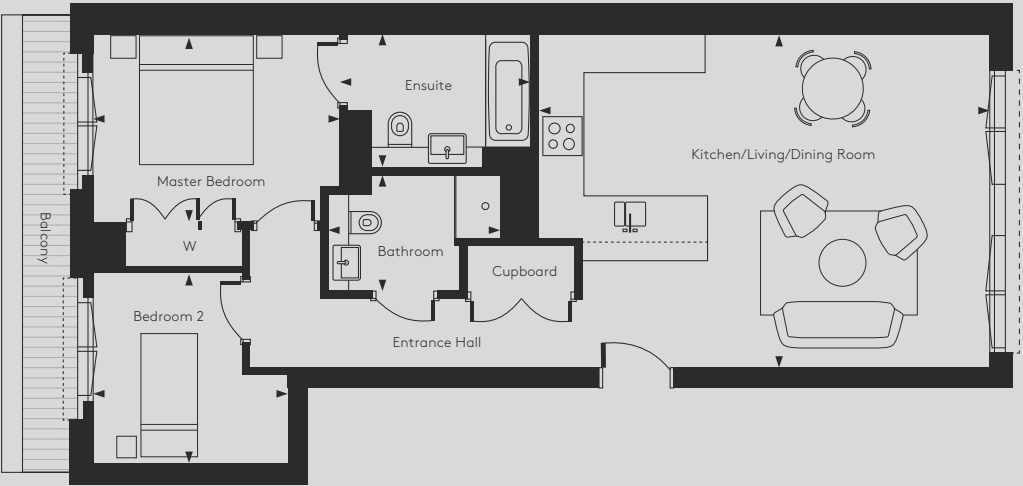


Dimensions		
Kitchen / Living / Dining Room	23' 3" x 17' 5"	7086 mm x 5308 mm
Master Bedroom	13' 0" x 9' 11"	3962 mm x 3022 mm
Ensuite	9' 10" x 6' 11"	2997 mm x 2108 mm
Bedroom 2	9' 11" x 10' 1"	3022 mm x 3073 mm
Bathroom	9' 2" x 6' 0"	2794 mm x 1828 mm
Total Area	865 sq ft	80 sq m

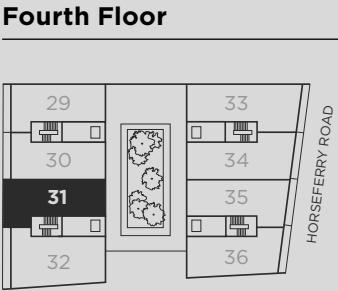


APARTMENT 31

Two Bedrooms
Fourth Floor

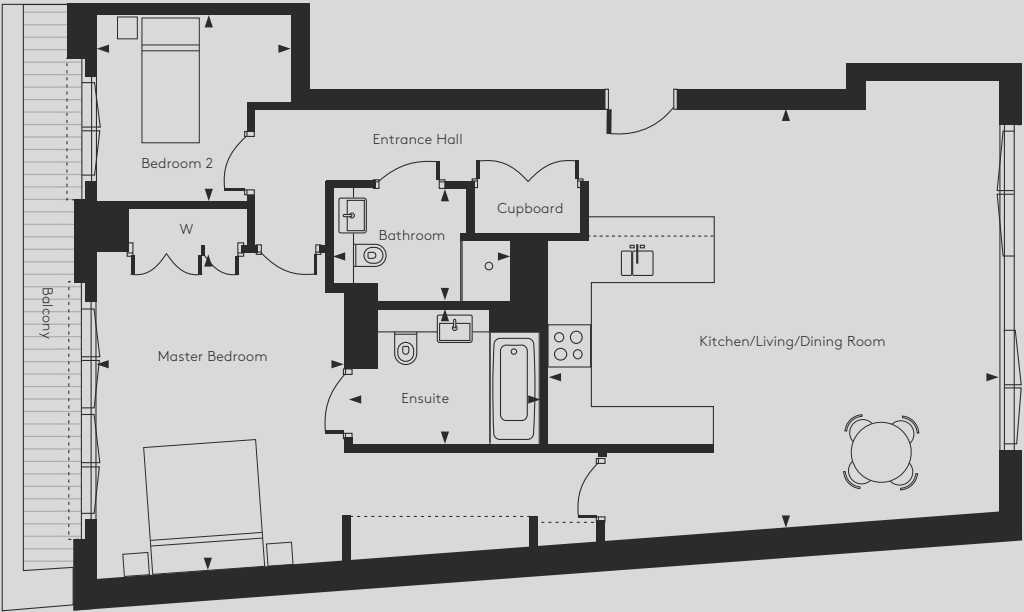


Dimensions		
Kitchen / Living / Dining Room	23' 3" x 17' 5"	7086 mm x 5308 mm
Master Bedroom	13' 0" x 9' 11"	3962 mm x 3022 mm
Ensuite	9' 10" x 6' 11"	2997 mm x 2108 mm
Bedroom 2	9' 11" x 10' 1"	3022 mm x 3073 mm
Bathroom	9' 2" x 6' 0"	2794 mm x 1828 mm
Total Area	865 sq ft	80 sq m

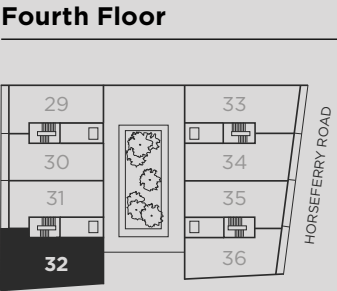


APARTMENT 32

Two Bedrooms
Fourth Floor

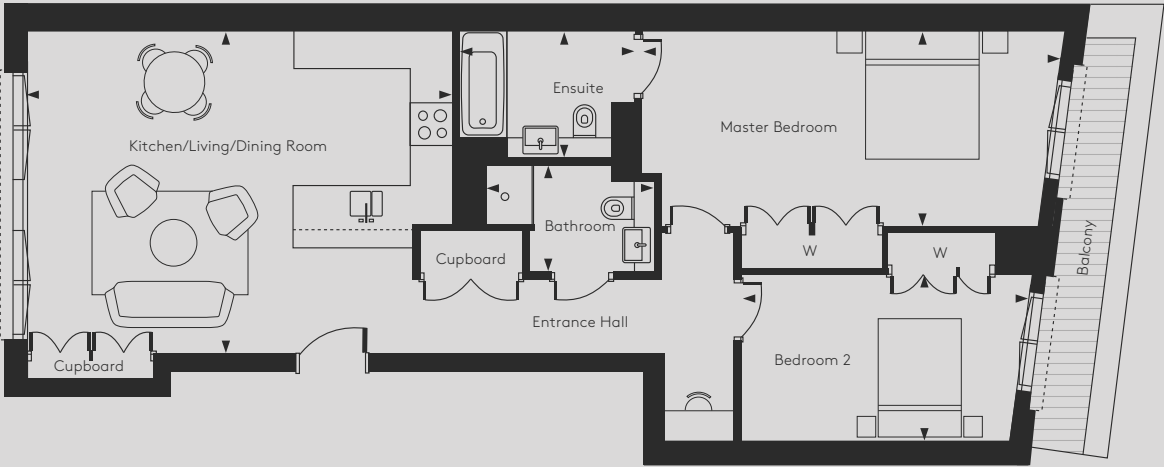


Dimensions		
Kitchen / Living / Dining Room	23' 3" x 21' 11"	7086 mm x 6680 mm
Master Bedroom	13' 0" x 16' 10"	3962 mm x 5130 mm
Ensuite	9' 10" x 6' 11"	2997 mm x 2108 mm
Bedroom 2	9' 1" x 10' 1"	3022 mm x 3073 mm
Bathroom	9' 2" x 6' 0"	2794 mm x 1828 mm
Total Area	1118 sq ft	104 sq m

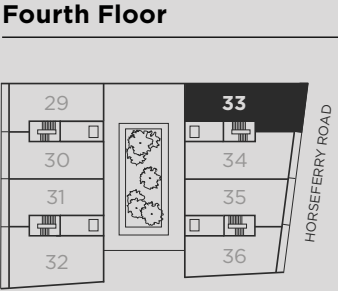


APARTMENT 33

Two Bedrooms
Fourth Floor

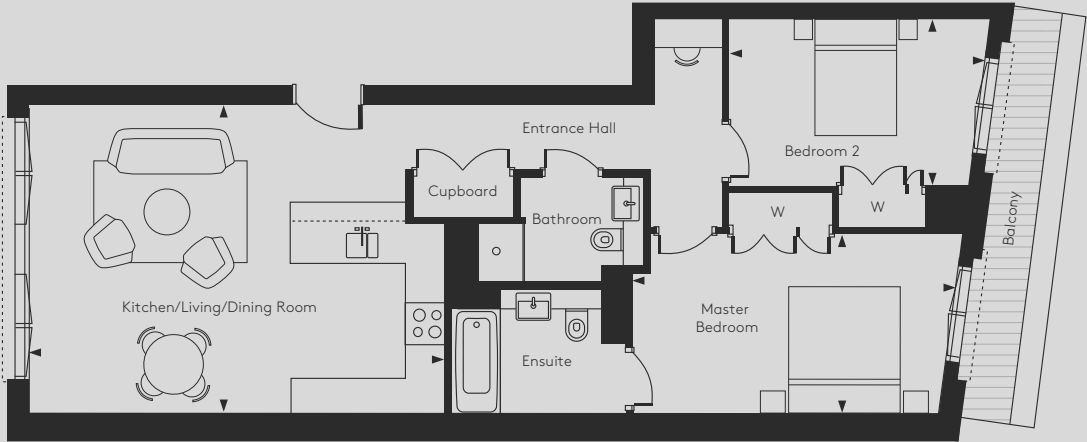


Dimensions		
Kitchen / Living / Dining Room	23' 3" x 17' 5"	7086 mm x 5308 mm
Master Bedroom	22' 6" x 10' 11"	6858 mm x 3327 mm
Ensuite	9' 10" x 6' 11"	2997 mm x 2108 mm
Bedroom 2	16' 1" x 9' 3"	4902 mm x 2819 mm
Bathroom	9' 2" x 6' 0"	2794 mm x 1828 mm
Total Area	1104 sq ft	103 sq m

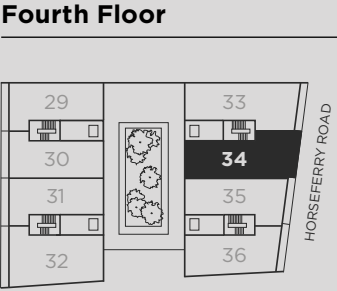


APARTMENT 34

Two Bedrooms
Fourth Floor

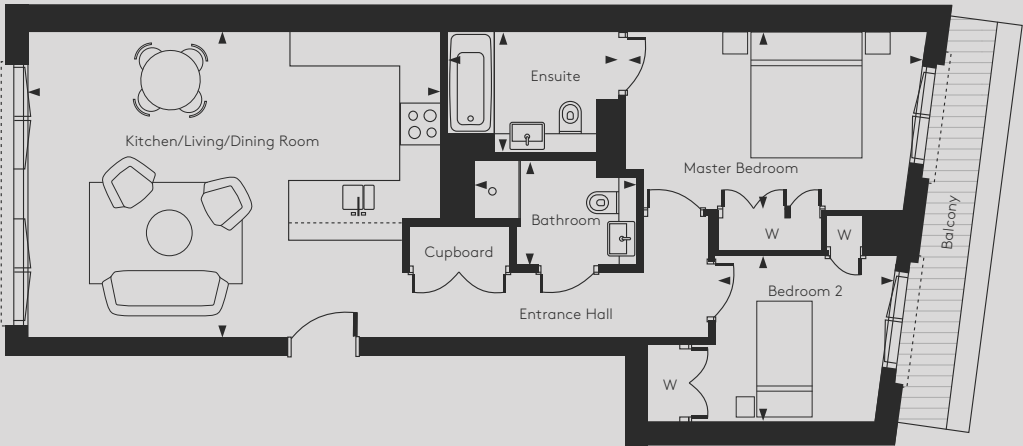


Dimensions		
Kitchen / Living / Dining Room	23' 3" x 17' 5"	7086 mm x 5308 mm
Master Bedroom	18' 4" x 10' 2"	5588 mm x 3098 mm
Ensuite	9' 10" x 6' 11"	2997 mm x 2108 mm
Bedroom 2	14' 8" x 9' 7"	4470 mm x 2921 mm
Bathroom	9' 2" x 6' 0"	2794 mm x 1828 mm
Total Area	1005 sq ft	93 sq m

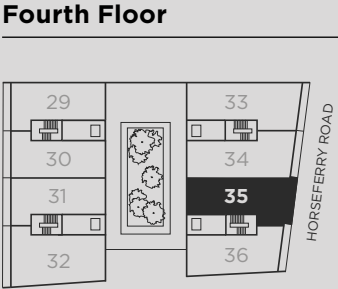


APARTMENT 35

Two Bedrooms
Fourth Floor



Dimensions		
Kitchen / Living / Dining Room	23' 3" x 17' 5"	7086 mm x 5308 mm
Master Bedroom	17' 1" x 10' 2"	5207 mm x 3098 mm
Ensuite	9' 10" x 6' 11"	2997 mm x 2108 mm
Bedroom 2	10' 4" x 9' 7"	3149 mm x 2921 mm
Bathroom	9' 2" x 6' 0"	2794 mm x 1828 mm
Total Area	935 sq ft	87 sq m

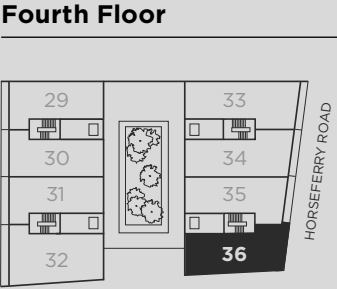


APARTMENT 36

Two Bedrooms
Fourth Floor

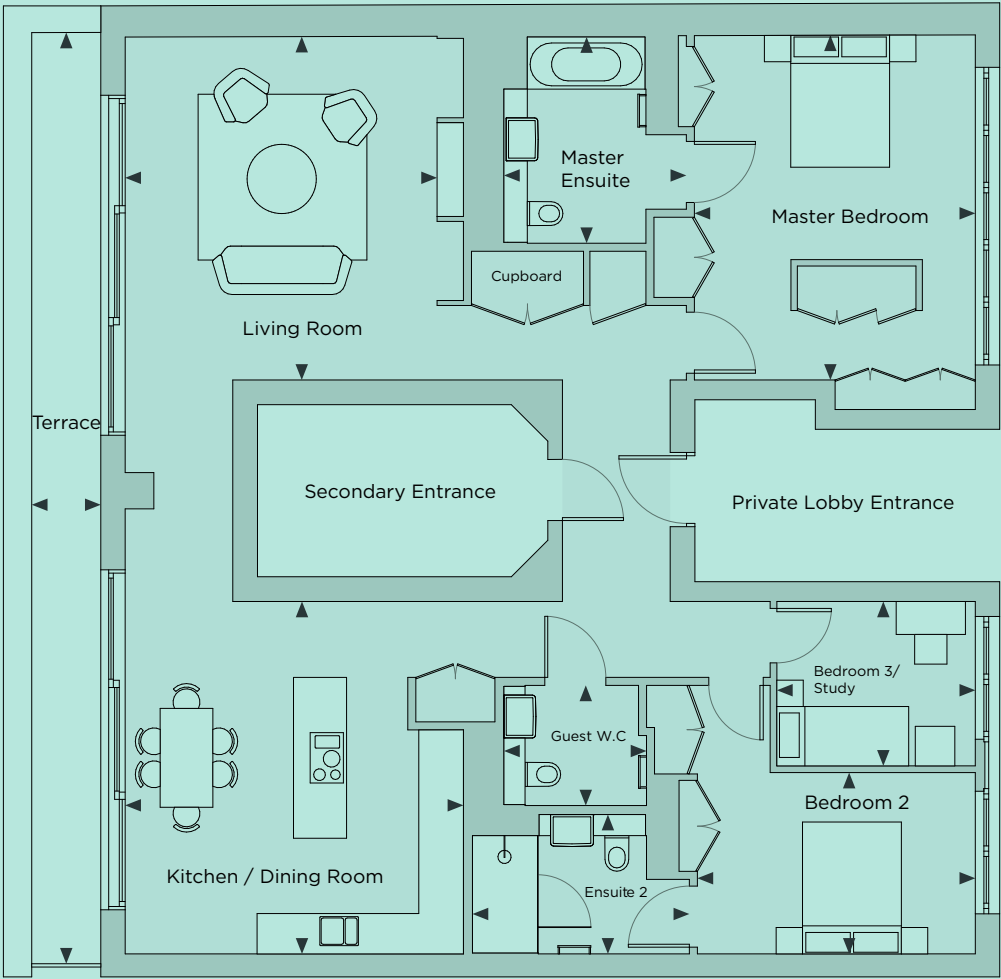


Dimensions		
Kitchen / Living / Dining Room	23' 3" x 19' 2"	7086 mm x 5842 mm
Master Bedroom	13' 10" x 10' 8"	4216 mm x 3251 mm
Ensuite	8' 6" x 6' 11"	2590 mm x 2108 mm
Bedroom 2	10' 8" x 9' 0"	3251 mm x 2743 mm
Bathroom	6' 11" x 6' 0"	2108 mm x 1828 mm
Total Area	911 sq ft	85 sq m

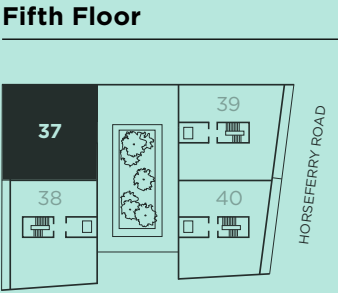


PENTHOUSE 37

Three Bedrooms
Fifth Floor

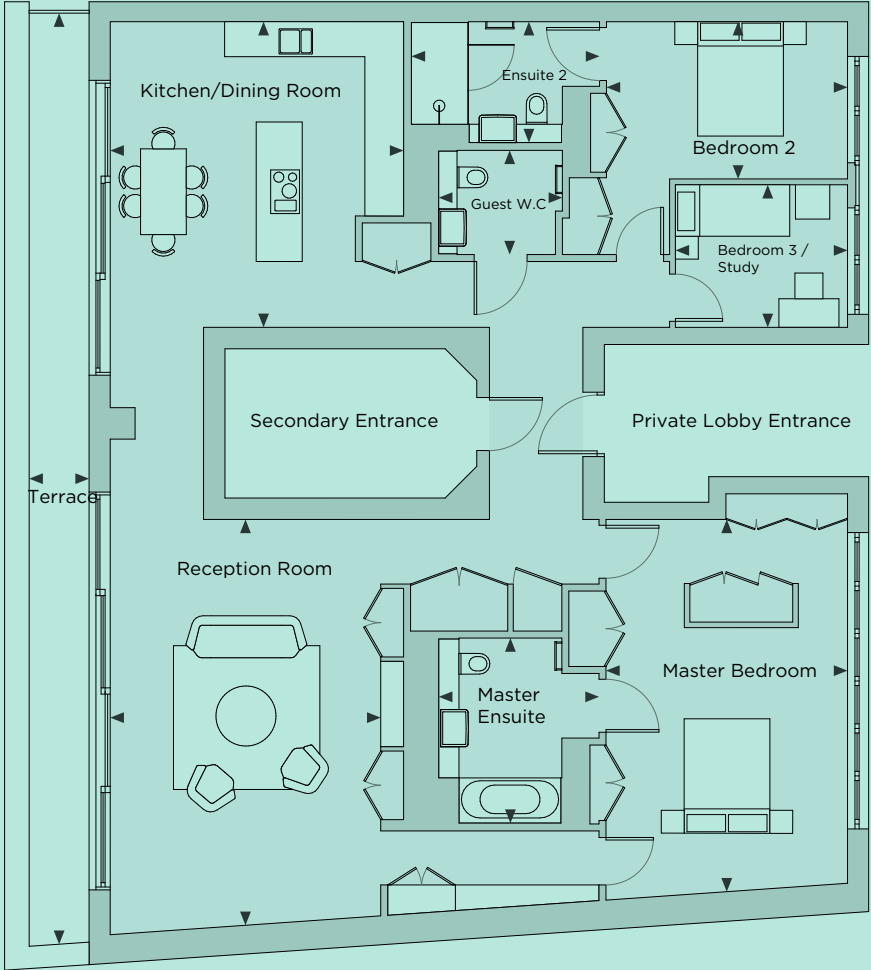


Dimensions		
Living Room	17' 1" x 15' 6"	6604 mm x 5156 mm
Kitchen / Dining Room	17' 6" x 16' 10"	6756 mm x 5054 mm
Terrace	46' 4" x 3' 5"	1412mm x 1041mm
Master Bedroom	17' 2" x 14'	5232 mm x 4267 mm
Ensuite 1	10' 3" x 9' 1"	3124 mm x 2895 mm
Bedroom 2	9' x 13' 10"	2743mm x 4216mm
Ensuite 2	6' 11" x 10' 10"	2108 mm x 3302 mm
Bedroom 3	8' 2" x 9' 11"	2489mm x 3022mm
Bathroom	6' x 7' 1"	1828 mm x 2159 mm
Total Area	1625 sq ft	151 sq m

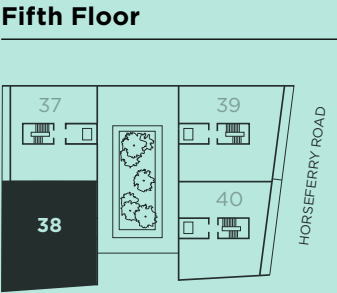


PENTHOUSE 38

Three Bedrooms
Fifth Floor

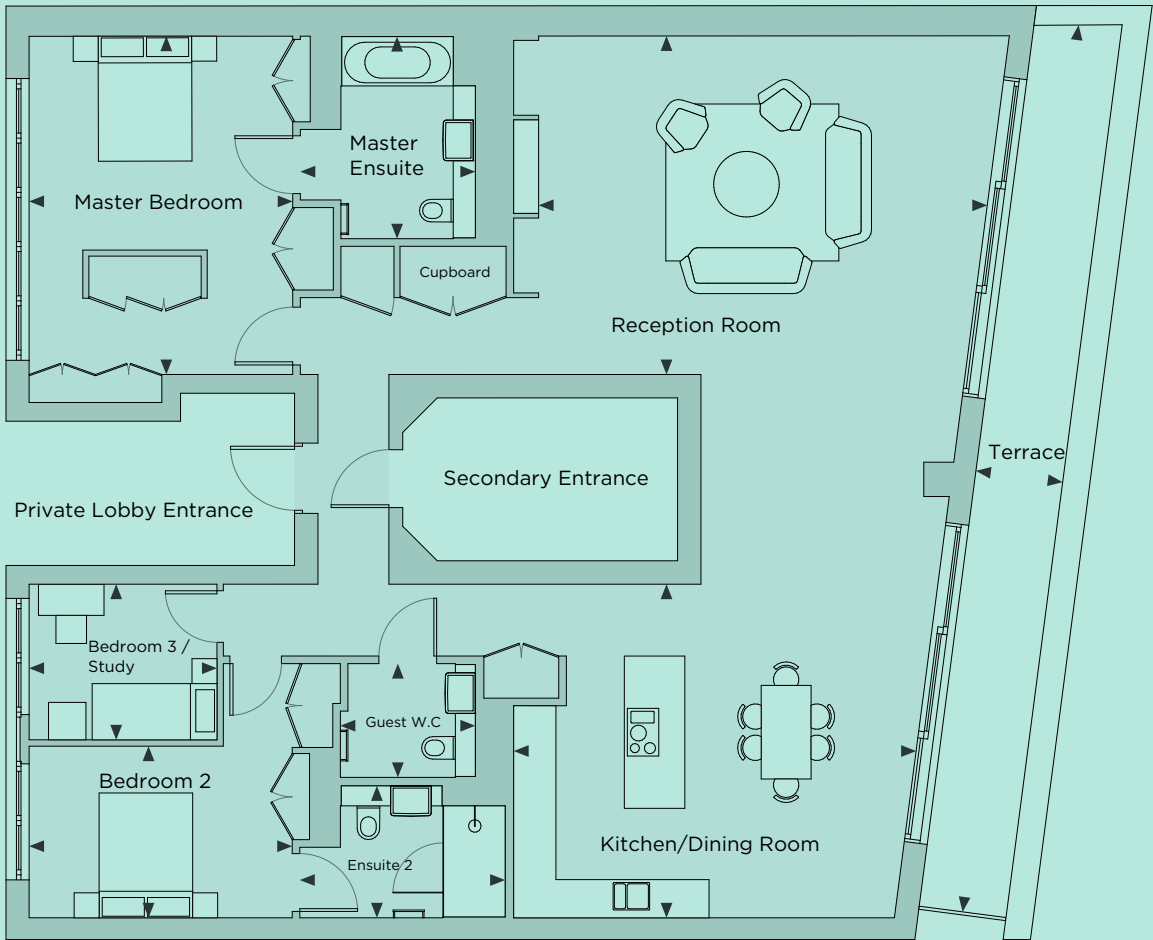


Dimensions		
Living Room	23' 3" x 15' 6"	4724 mm x 8661 mm
Kitchen / Dining Room	17' 6" x 16' 10"	6756 mm x 5054 mm
Terrace	53' 5" x 3' 5"	1628mm x 1041mm
Master Bedroom	21' 4" x 13' 10"	6502mm x 4216mm
Ensuite 1	10' 7" x 9' 2"	3225mm x 2794mm
Bedroom 2	9' x 13' 10"	2743mm x 4216mm
Ensuite 2	6' 11" x 10' 10"	2108mm x 3302mm
Bedroom 3	8' 2" x 9' 11"	2489mm x 3022mm
Bathroom	6' x 7' 1"	1828mm x 2159mm
Total Area	1852 sq ft	172 sq m

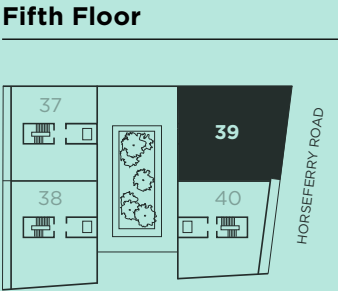


PENTHOUSE 39

Three Bedrooms
Fifth Floor

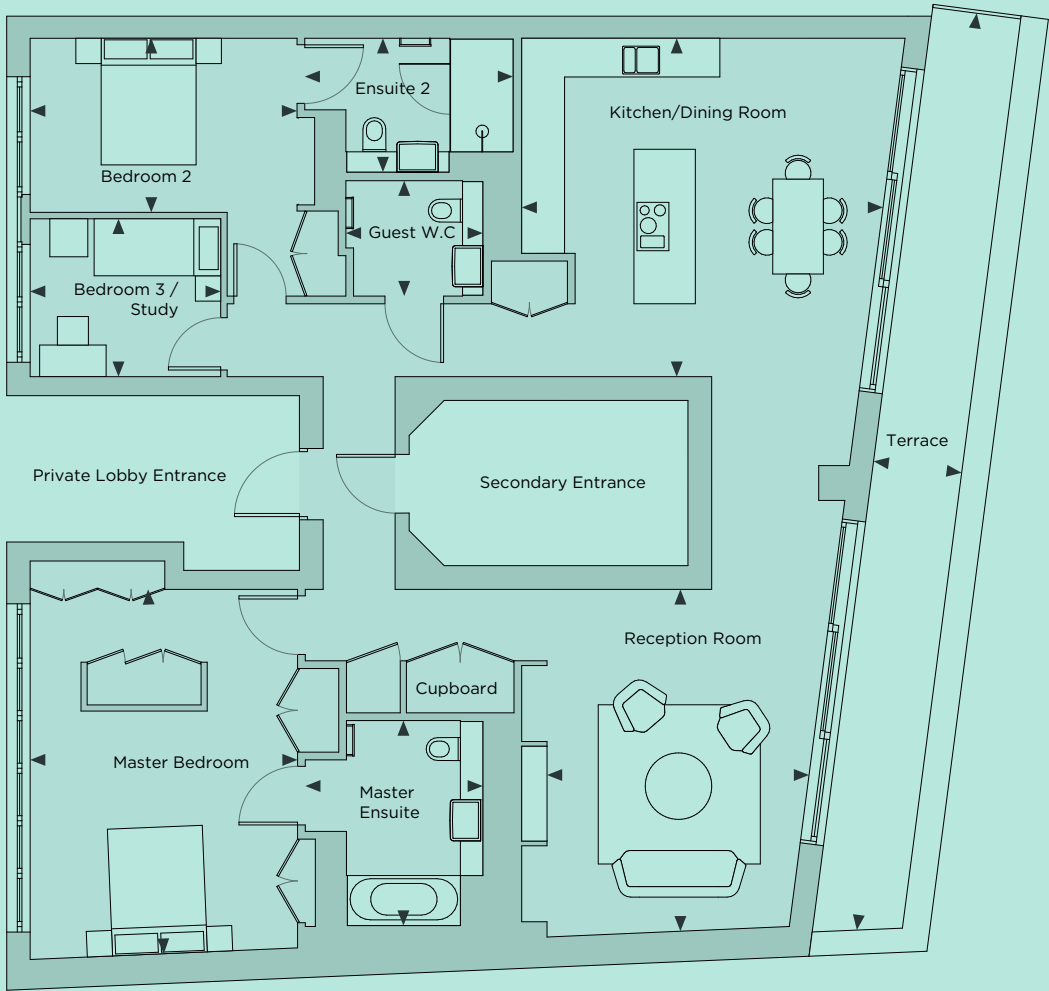


Dimensions		
Living Room	17' 10" x 23' 7"	5435mm x 7188mm
Kitchen / Dining Room	17' 6" x 21' 2"	5334mm x 6451mm
Terrace	47' x 4' 7"	1432mm x 1397mm
Master Bedroom	17' 9" x 13' 10"	5410mm x 4216mm
Ensuite 1	10' 7" x 9' 2"	3225mm x 2794mm
Bedroom 2	9' x 13' 10"	2743mm x 4216mm
Ensuite 2	6' 11" x 10' 10"	2108mm x 3302mm
Bedroom 3	8' 2" x 9' 11"	2489mm x 3022mm
Bathroom	6' x 7' 1"	1828mm x 2159mm
Total Area	1945 sq ft	180 sq m

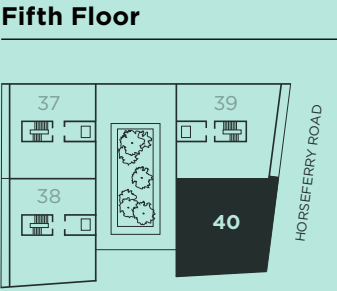


PENTHOUSE 40

Three Bedrooms
Fifth Floor



Dimensions		
Living Room	17' 9" x 13' 7"	5410mm x 4140mm
Kitchen / Dining Room	17' 6" x 18' 9"	5334mm x 5715mm
Terrace	47' 11" x 4' 7"	1460mm x 1397mm
Master Bedroom	18' 11" x 13' 10"	5765mm x 4216mm
Ensuite 1	10' 7" x 9' 2"	3225mm x 2794mm
Bedroom 2	9' x 13' 10"	2743mm x 4216mm
Ensuite 2	6' 11" x 10' 10"	2108mm x 3302mm
Bedroom 3	8' 2" x 9' 11"	2489mm x 3022mm
Bathroom	6' x 7' 1"	1828mm x 2159mm
Total Area	1680 sq ft	156 sq m



CHIMES
WESTMINSTER

Part of  Lifestory