

Chester Terrace, London NW1

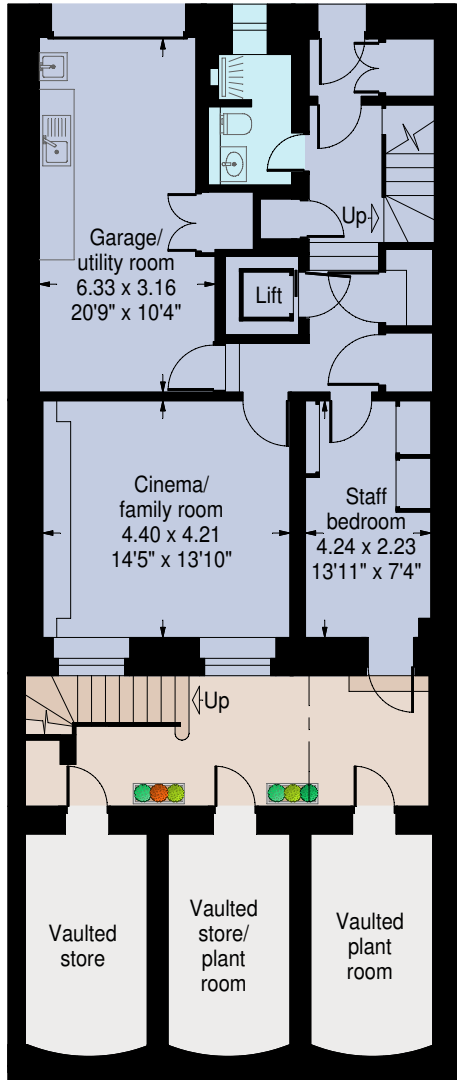
Gross internal area (approx):

388.8 sq.m. (4185 sq.ft.)

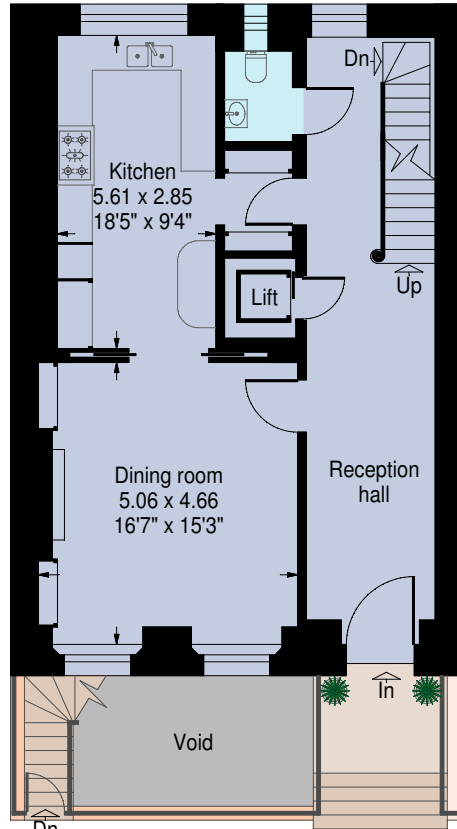
Not including vaulted stores - 25.8 sq.m. (278 sq.ft.)

For identification purposes only. Not to scale.

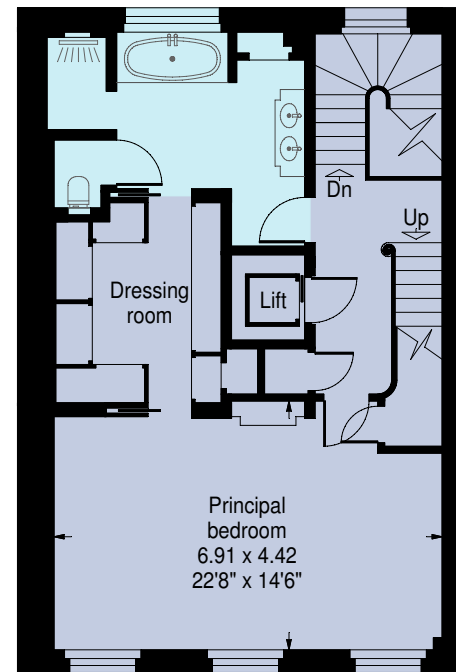
Proplan UK ©



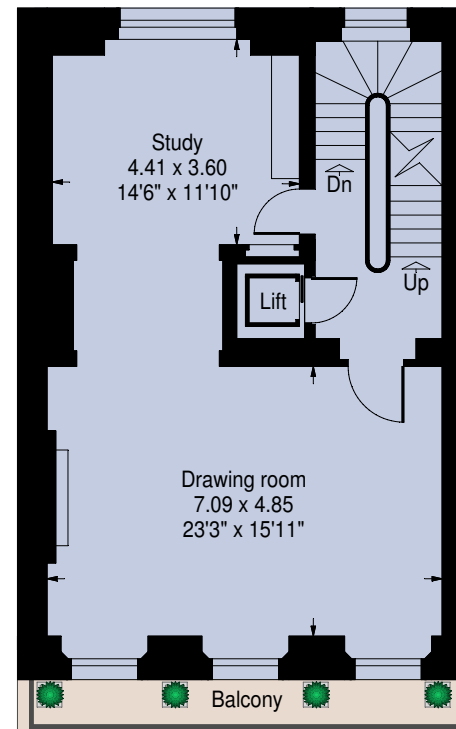
Lower ground floor



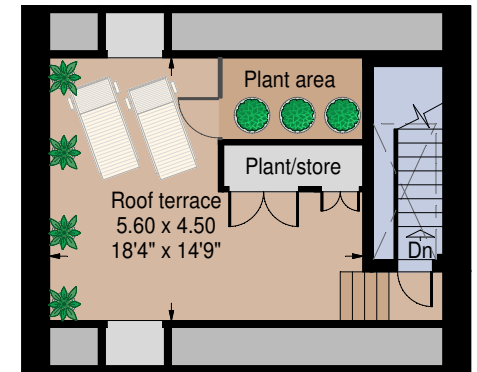
Ground Floor



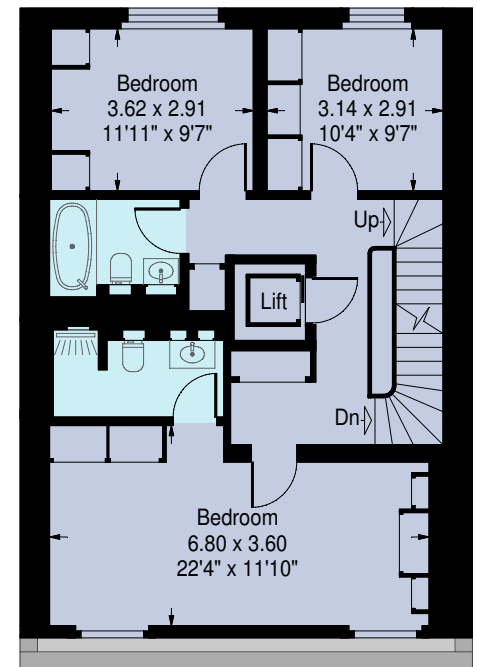
Second floor



First floor



Fourth floor (roof level)



Third floor