



# Grove Court

 BEAUCHAMP  
ESTATES



Grove Court  
St John's Wood, NW8

Guide Price: £599,950

Tenure: Leasehold

Council Tax Band: E

A well-presented one double bedroom first floor apartment in a popular portered block in St. Johns Wood. The flat comprises of 457 square feet and has the benefit of a portered block, with lift and first come first serve parking.



## ACCOMMODATION:

- Double Bedroom
- Family Bathroom
- Reception Room
- Kitchen with sitting area
- Portered Block
- Lift Access



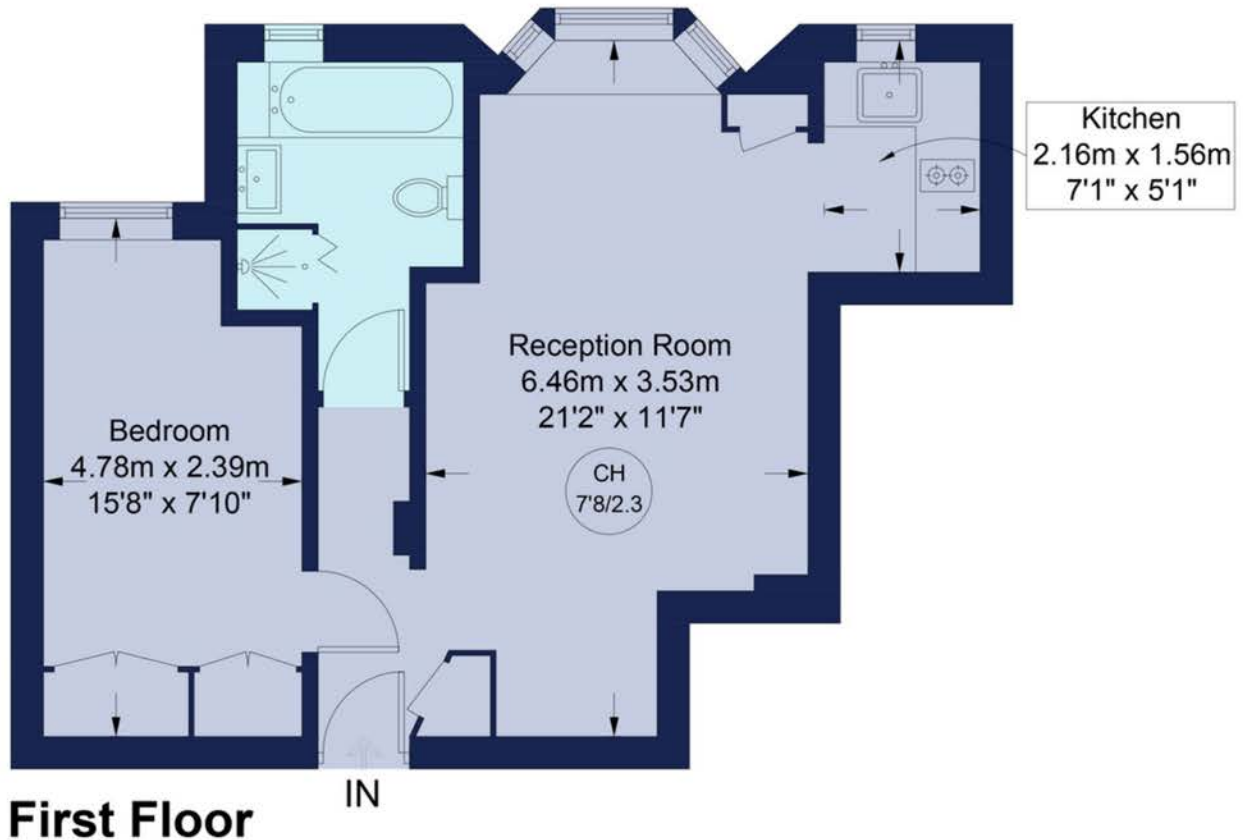
## LOCATION

Grove Court is located next to the world famous Abbey Road Studios and is a short walk away from St John's Wood High Street, Underground Station (Jubilee line) and Regent's Park



### Grove Court, NW8

Approximate Gross Internal Area = 42.5 sq m / 457 sq ft



This plan is for layout guidance only. Not drawn to scale unless stated. Windows and door openings are approximate. Whilst every care is taken in the preparation of this plan, please check all dimensions, shapes and compass bearings before making any decisions reliant upon them. (ID986098)

**Viewing by appointment only with  
Beauchamp Estates**

**+44 (0)20 7722 9793**

**sjw@beauchamp.com**

**80 St John's Wood High Street, NW8 7SH**

