

PALACE COURT
BAYSWATER, W2



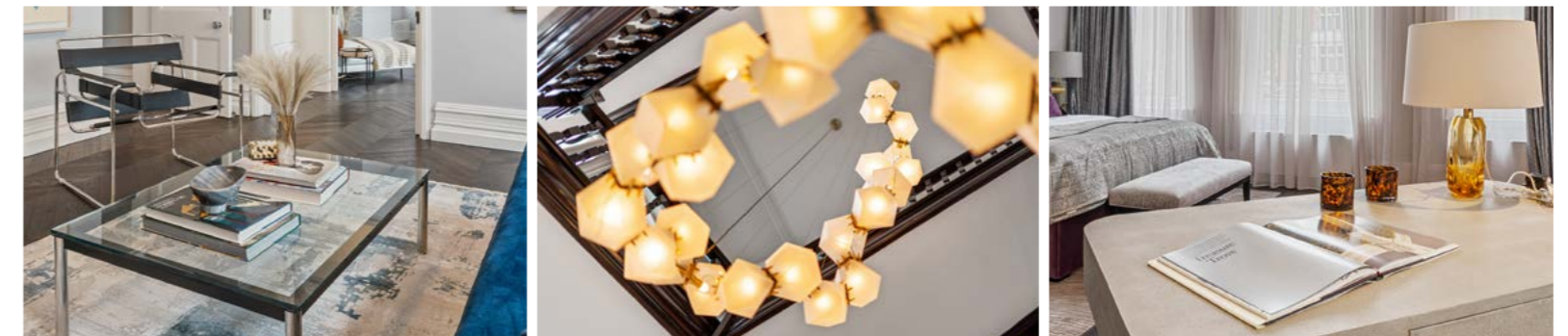


PALACE COURT

Palace Court presents an exceptional seven-bedroom redbrick house in the heart of prestigious Bayswater on the border to Knightsbridge. Finished to the highest of standards throughout, this beautifully interior-designed furnished home boasts impressive room sizes with high ceilings and original cornicing, an exceptional glass fireplace, marble bathrooms, a bespoke kitchen breakfast room, and a guest cloakroom.

The house has four reception rooms which are a spacious family room, a formal drawing room, a dining room, and a large office or study. The principal bedroom suite occupies the entire first floor showcasing an elegant bathroom, dressing room, private study, and sitting room, and a night WC.

There are more three more suites, three more bedrooms, and a further family bathroom. Palace Court includes secure off-street parking bays for four cars as well as a landscaped rear garden.











BAYSWATER, W2

Located opposite the prestigious Northern gates of Kensington Palace Gardens, Palace Court benefits from the luxurious amenities of the surrounding area including Notting Hill, and Kensington.

Bayswater Underground Station (Circle & District Lines), and Notting Hill Underground Station (Central and Circle & District Lines) are within a short stroll away.

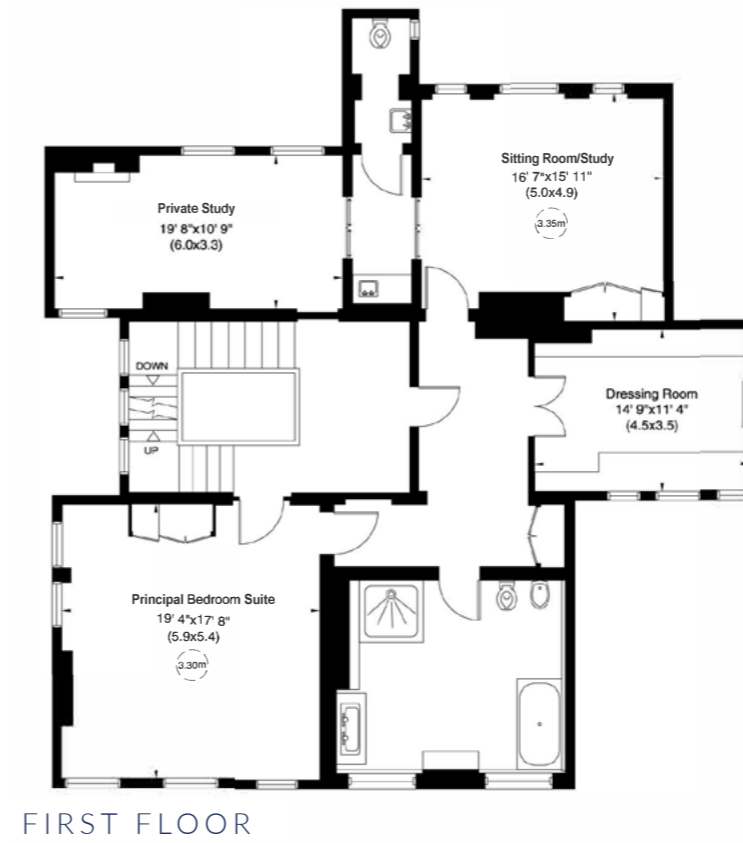
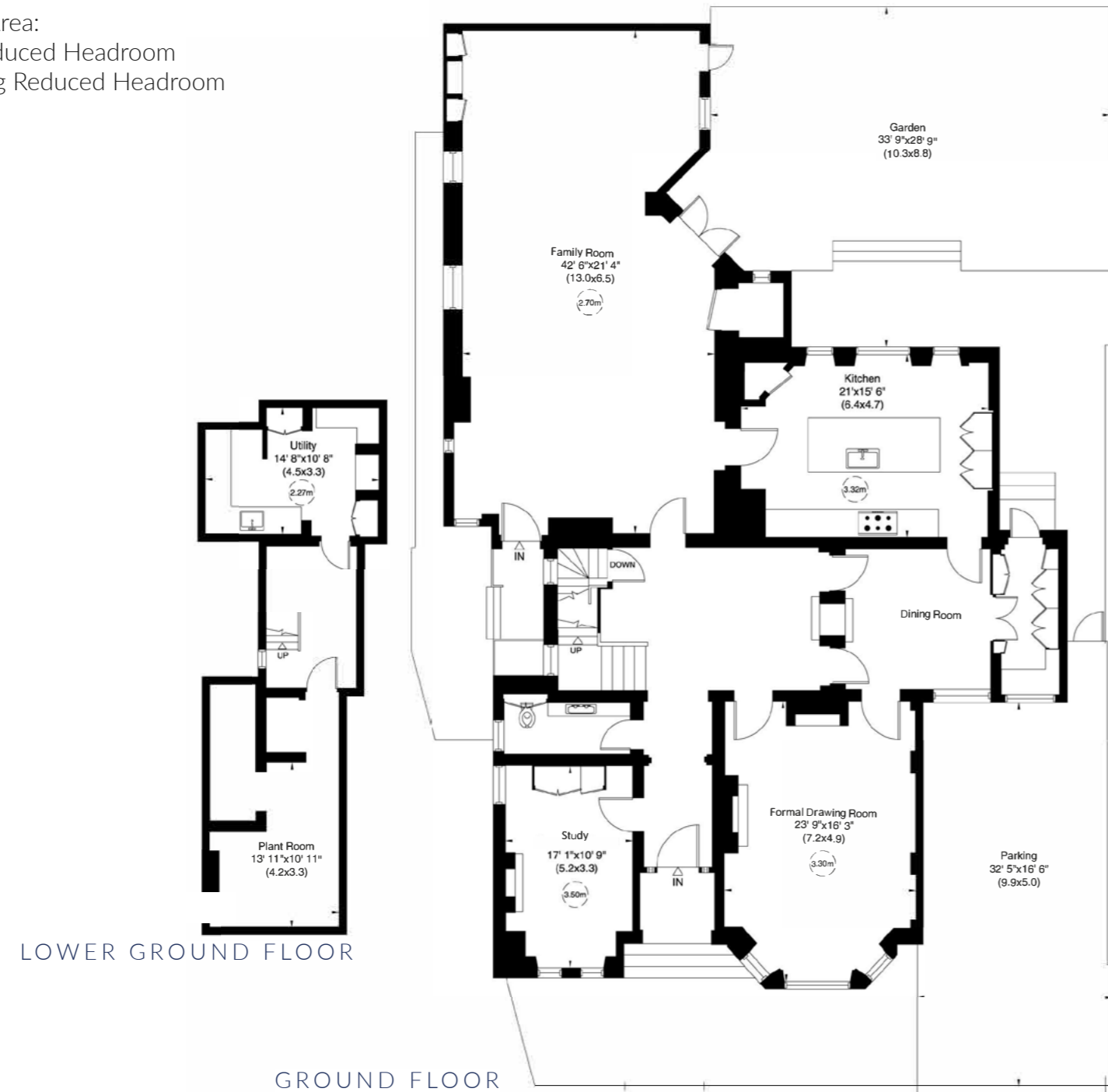






PALACE COURT, W2

Approximate Gross Internal Area:
6,899sqft (641) Including Reduced Headroom
6,804sqft (632sqm) Excluding Reduced Headroom







Viewing by appointment only with Beauchamp Estates

Price: £20,500,000 Subject To Contract

Freehold

T: 020 7499 7722

E: londonsales@beauchamp.com

24 Curzon Street, London, W1J 7TF

These particulars have been produced as a general guide for this property only and no other purpose. They are not an offer or contract. You should not rely on statements in these particulars or by word of mouth or in writing as being factually accurate about the property, its condition or its value. Neither any primary agent or joint agent has any authority to make or give any representations or warranties in relation to the property, and accordingly any information given is entirely without responsibility on the part of the agents or lessor(s). The photographs show only certain parts of the property as they appeared at the time they were taken. Any areas, measurements and distances given are approximate only. Any reference to alterations to, or use of, any part of the property does not mean that any necessary planning, building regulations or other consent has been obtained nor have any services, equipment or facilities been tested. A lessee should satisfy themselves by inspection or otherwise. The VAT position relating to the property may change without notice. Please contact us for further information regarding the approved Client Money Protection (CMP) scheme and the property redress scheme which we are a member of.



