



GREYBROOK HOUSE

MAYFAIR



This Grade II listed, six-storey Art Deco building was designed by Sir John Burnett and Partners, who were also responsible for the King Edward VII gallery at the British Museum and Unilever House.

Completely refurbished to a phenomenally high standard, the interior of Greybrook House reprises to spectacular effect the Art Deco theme found on the exterior and the Claridge's façade opposite.

The exquisite craftsmanship, everywhere in evidence, allows for a seamless blending of one of history's most recognisable design periods with more contemporary elements.

From the street, bronze doors set into the monumental white Portland stone façade give access to a high ceilinged lobby whose refined details and elegant lift carriage give promise of luxury to come.

Those expectations are amply fulfilled when on leaving the lift by private code you enter a hushed domain of extravagant beauty combining jewel like details, bespoke joinery, natural stone and subtle lighting.

Technology is discreetly and seamlessly layered into each apartment. Located in the heart of Mayfair, London's most exclusive residential and retail district, Greybrook House is a building exemplifying the convenience, luxury and drama to which the best of modern living aspires.





PLATE A  
 28 BROOK STREET *Greybrook House*  
 ARCHITECT *Sir John Burnett & Partners*



PLATE B  
 28 BROOK STREET *Greybrook House entrance*

1929



PLATE C  
28 BROOK STREET *Bechstein* showroom  
ARCHITECT *Sir John Burnett & Partners*

1952



PLATE D  
28 BROOK STREET *Allied Ironfounders* showrooms with brick mural  
BRICK MURAL DESIGNER *Trevor Tennant*





MAYFAIR





BROOK STREET



BURLINGTON ARCADE





NEW BOND STREET

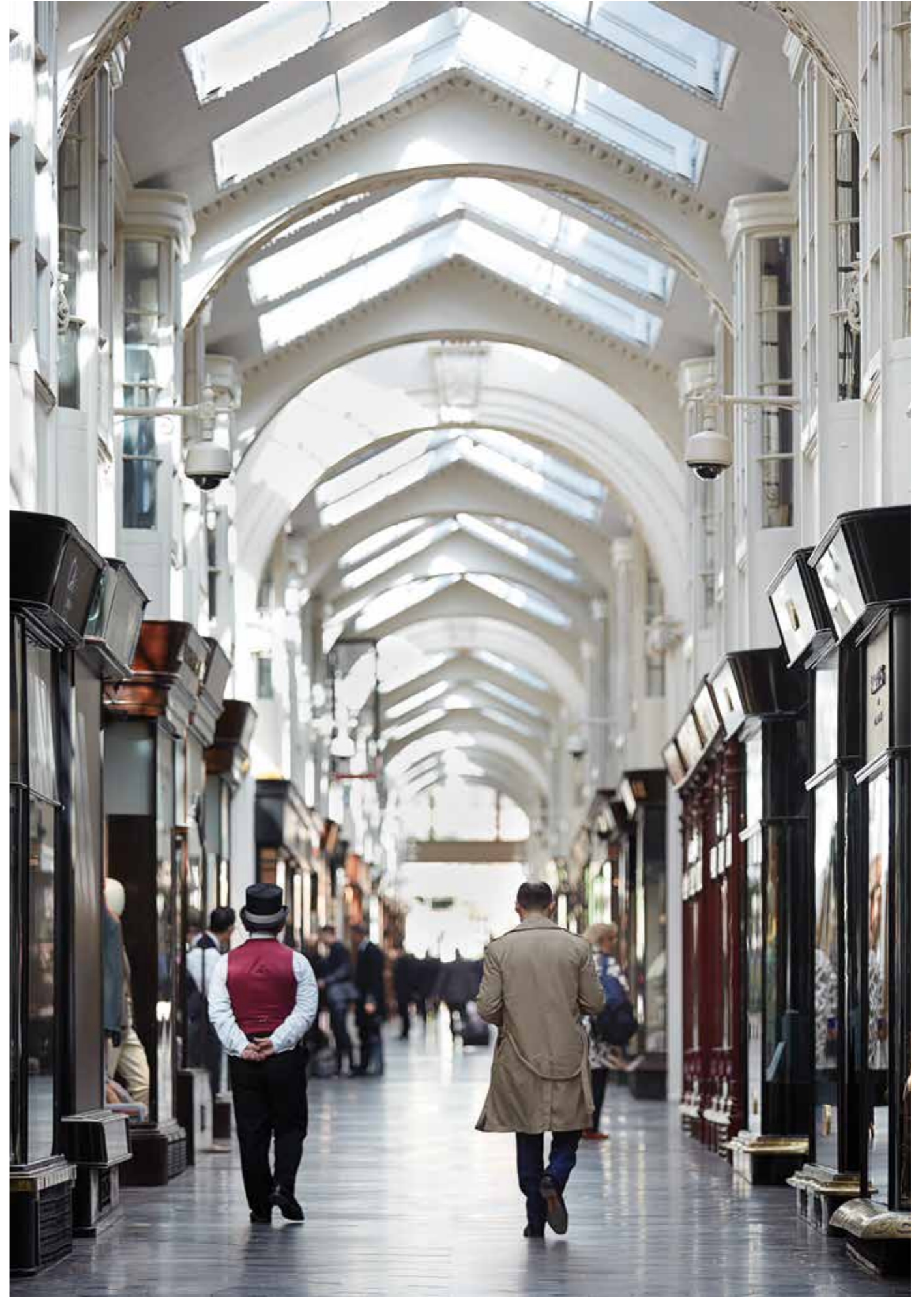


GROSVENOR SQUARE





NEW BOND STREET

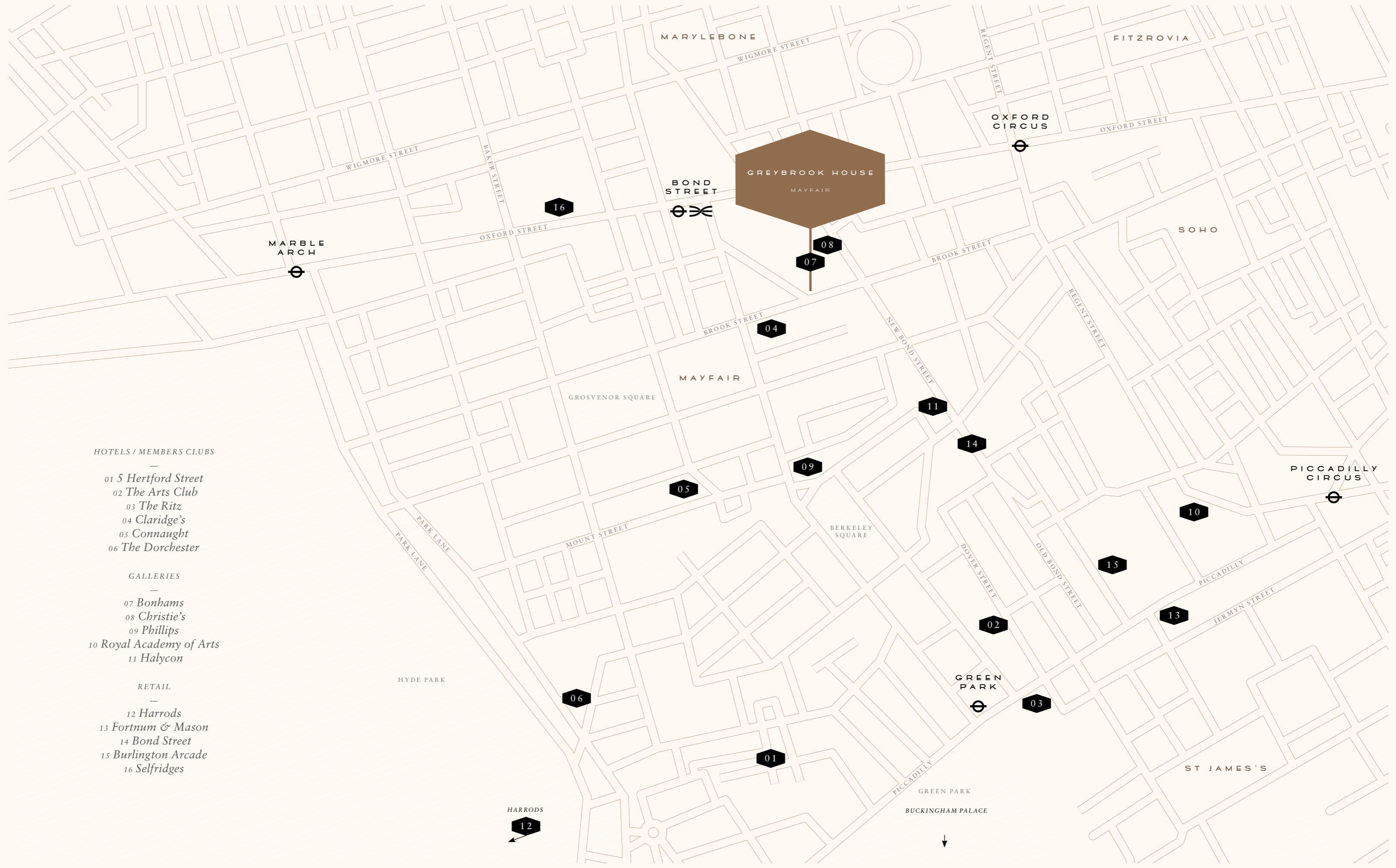


BURLINGTON ARCADE









HOTELS / MEMBERS CLUBS

- 01 5 Hertford Street
- 02 The Arts Club
- 03 The Ritz
- 04 Claridge's
- 05 Connaught
- 06 The Dorchester

GALLERIES

- 07 Bonhams
- 08 Christie's
- 09 Phillips
- 10 Royal Academy of Arts
- 11 Halycon

RETAIL

- 12 Harrods
- 13 Fortnum & Mason
- 14 Bond Street
- 15 Burlington Arcade
- 16 Selfridges



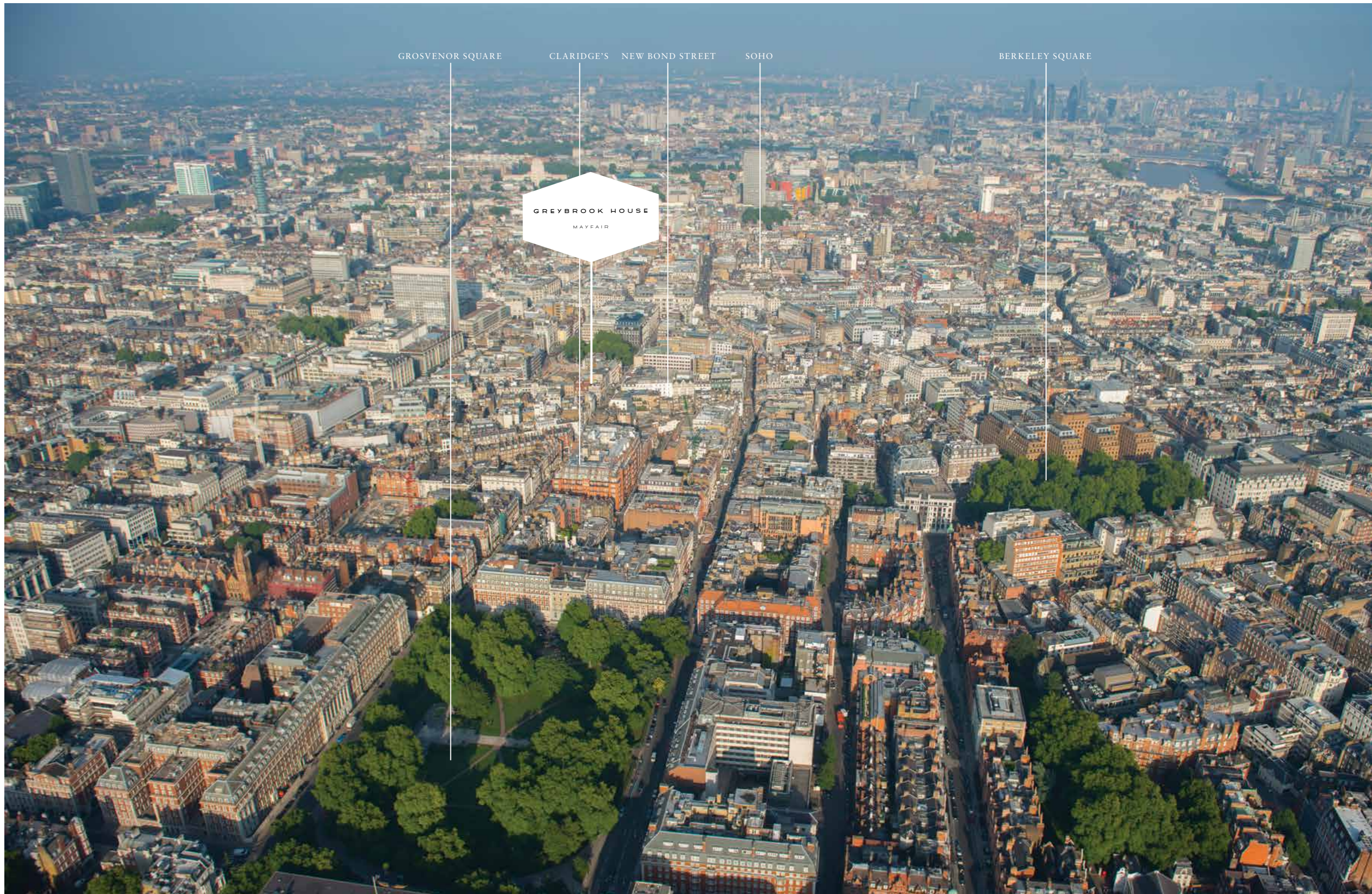
GROSVENOR SQUARE

CLARIDGE'S NEW BOND STREET

SOHO

BERKELEY SQUARE

GREYBROOK HOUSE  
MAYFAIR







THE BUILDING

































FLOOR PLANS



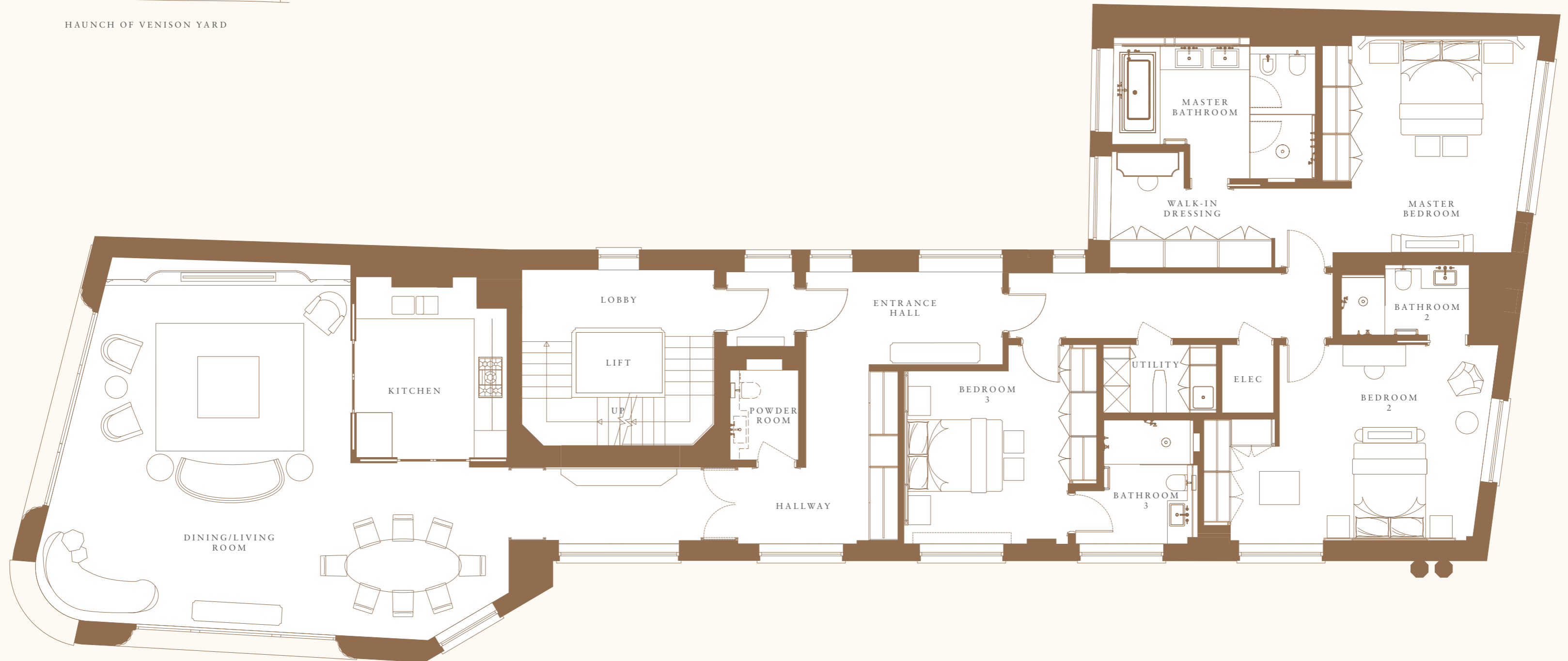
APARTMENTS 1-3



HAUNCH OF VENISON YARD

Floors  
1,2&3

2700 sq ft



LIVING	34.4" x 24"6'
KITCHEN	12.1" x 10"8'
MASTER BEDROOM	15.7" x 13"8'
BEDROOM 2	16.1" x 14"4'
BEDROOM 3	12.5" x 11"9'





THE PENTHOUSE



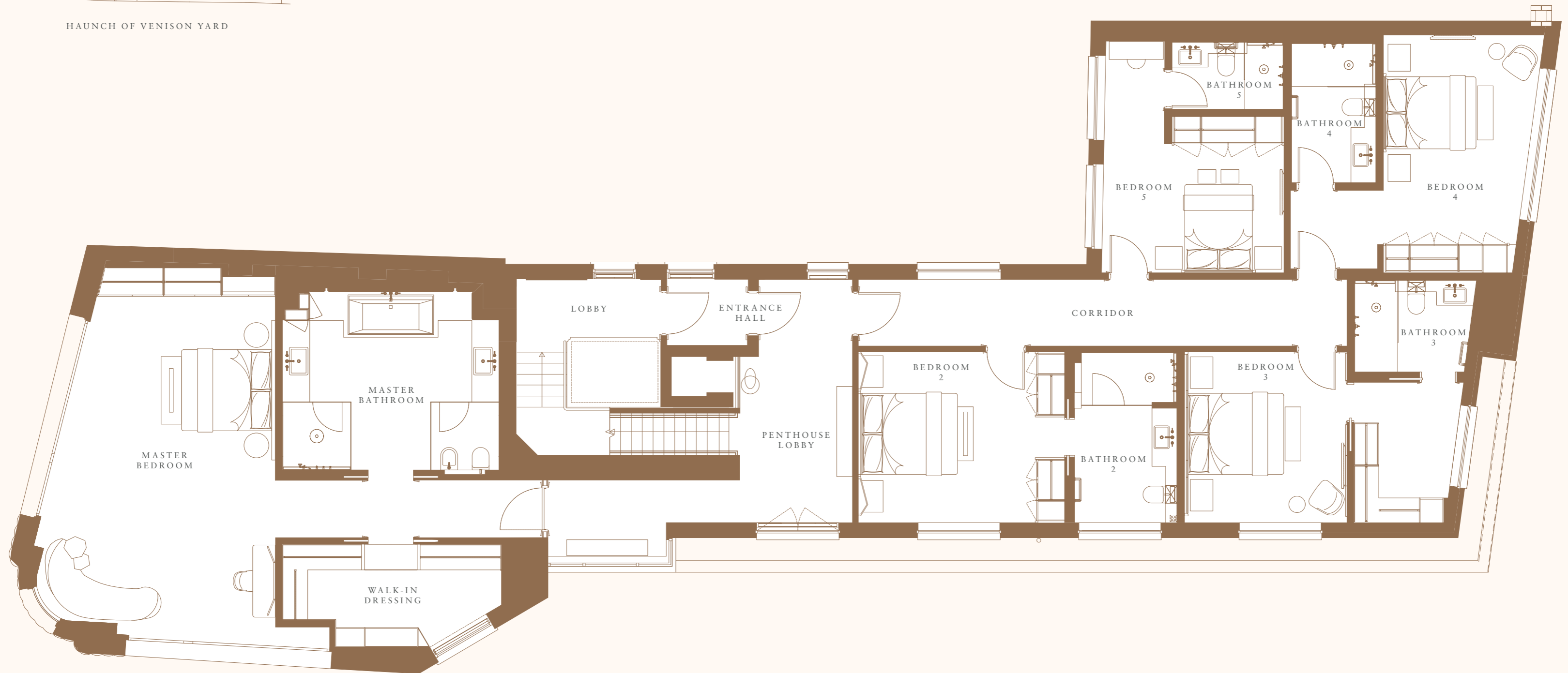
PENTHOUSE LOWER



Penthouse Lower

HAUNCH OF VENISON YARD

Floor  
4



MASTER BEDROOM	24" x 17"1'
BEDROOM 2	13.1" x 12"5'
BEDROOM 3	12.5" x 11"8'
BEDROOM 4	15.1" x 11"5'
BEDROOM 5	13.1" x 9"2'



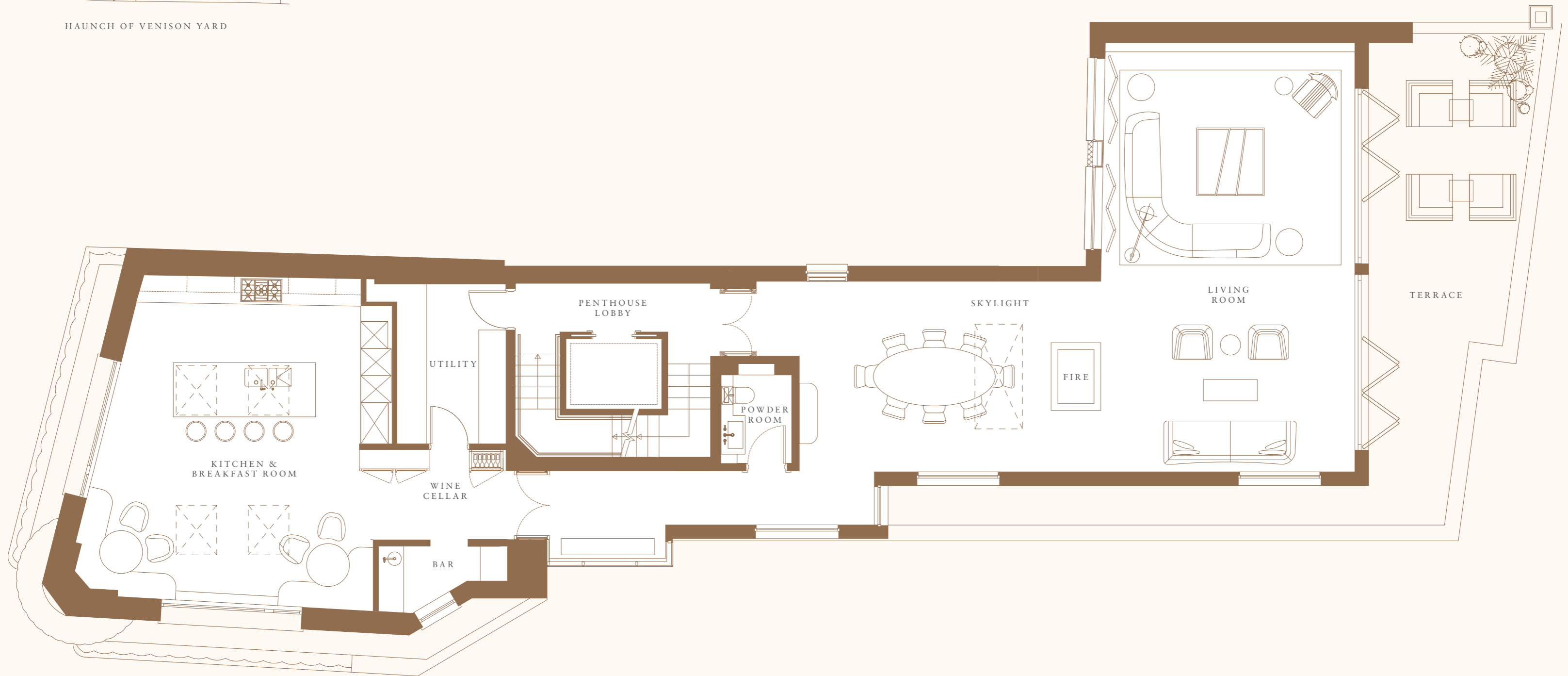
PENTHOUSE UPPER



Penthouse Upper

HAUNCH OF VENISON YARD

Floor  
5



LIVING	31.2" x 18"4'
DINING	21.2" x 13"8'
KITCHEN	24.3" x 21"6'



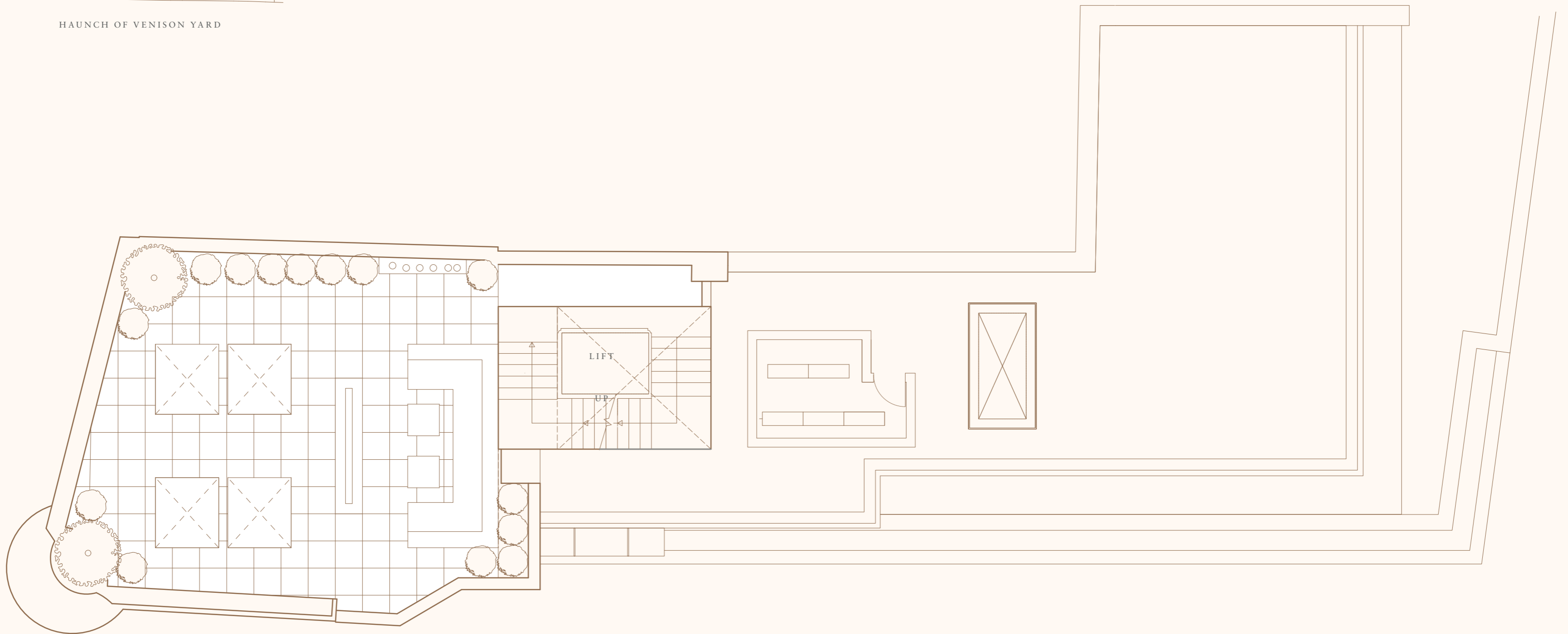
PENTHOUSE TERRACE

*Penthouse Terrace*



HAUNCH OF VENISON YARD

Floor  
6



INTERNAL	4599 sq ft
TERRACES	1216 sq ft
STAFF FLAT	748 sq ft
TOTAL	6563 sq ft















The logo consists of three horizontal dark blue bars stacked vertically, positioned to the left of the company name.

BEAUCHAMP  
ESTATES