



Brompton
Square SW3

BEAUCHAMP
ESTATES

KNIGHTSBRIDGE SW₃

Situated in the heart of Knightsbridge, Brompton Square presents a beautiful and impressive six-bedroom family townhouse. In immaculate condition throughout, this luxurious home boasts 5922 sq ft of expansive living accommodation. Comprising of four reception rooms, fully equipped and bespoke kitchen, dining room, study, an indoor swimming pool with sauna and gym facilities, two private balconies, and two private terraces.

The principal suite occupies the entire second floor with a walk-in wardrobe and elegant bathroom. There are five further bedrooms (three ensuite).

Further benefits include lift access from the lower ground floor to the second floor, housekeeping four days a week (Mon, Tues, Thurs, Friday), property management, laundry service, bedlinen included, changed, and laundered, towels available, Nespresso coffee machine and a wide range of popular TV channels and media entertainment.









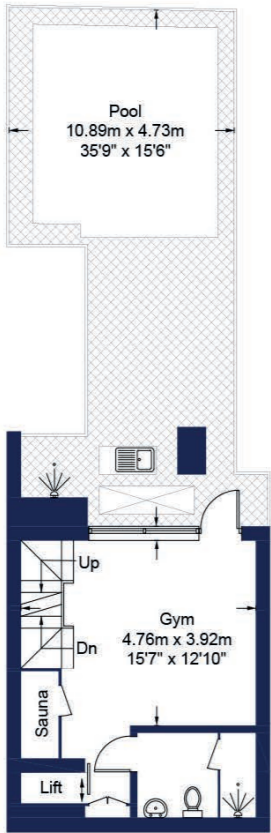




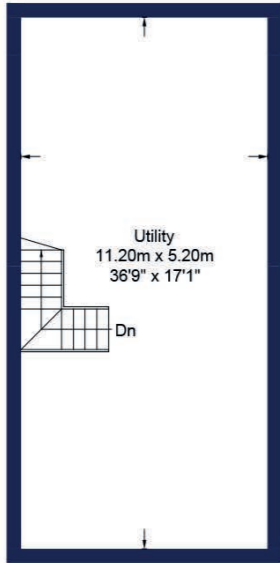


FLOORPLAN

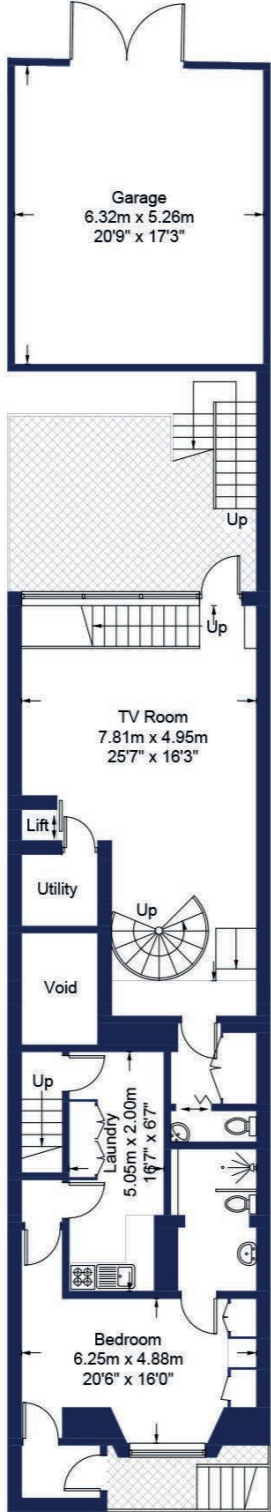
Approximate Gross Internal Area
550.2 sq m / 5,922 sq ft



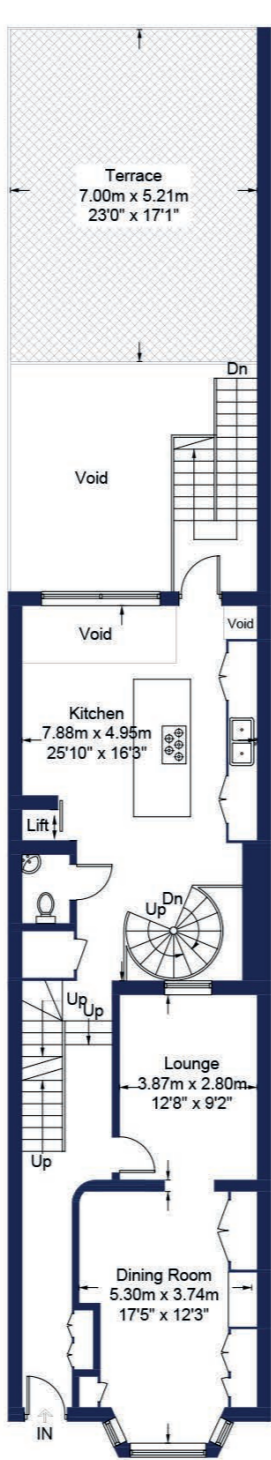
Lower Ground Floor 1



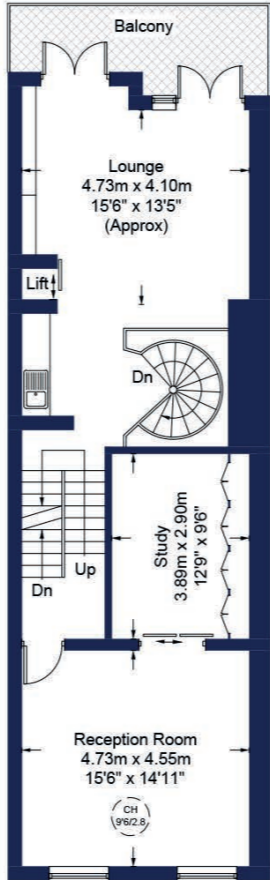
Lower Ground Floor 2



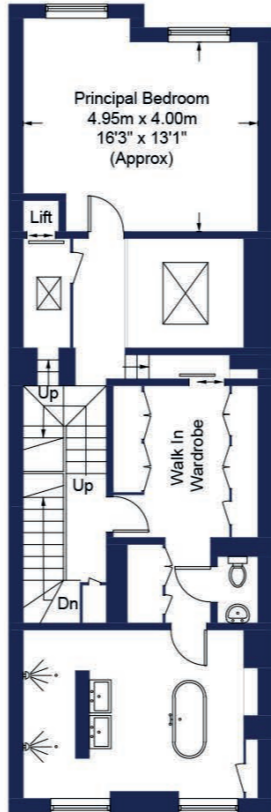
Lower Ground Floor



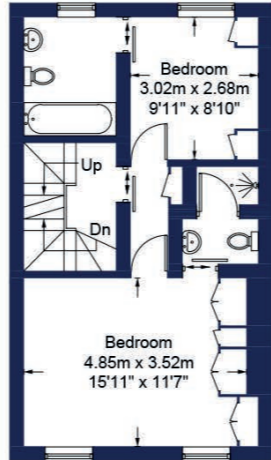
Ground Floor



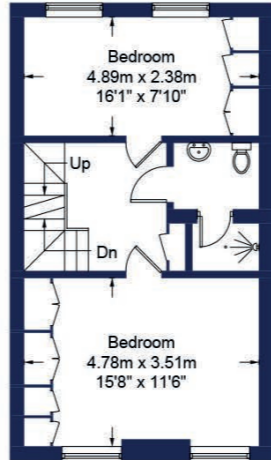
First Floor



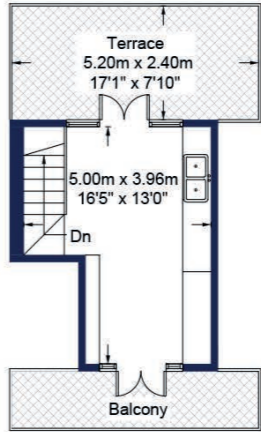
Second Floor



Third Floor



Fourth Floor



Fifth Floor

TERMS

Available for Short Let

£20,500 per week

Viewings By appointment only

For more information please contact:



T: 020 7499 7722

E: londonlettings@beauchamp.com

24 Curzon Street

W1J 7TF

www.beauchamp.com

These particulars have been produced as a general guide for this property only and no other purpose. They are not an offer or contract. You should not rely on statements in these particulars or by word of mouth or in writing as being factually accurate about the property, its condition or its value. Neither any primary agent or joint agent has any authority to make or give any representations or warranties in relation to the property, and accordingly any information given is entirely without responsibility on the part of the agents or lessor(s). The photographs show only certain parts of the property as they appeared at the time they were taken. Any areas, measurements and distances given are approximate only. Any reference to alterations to, or use of, any part of the property does not mean that any necessary planning, building regulations or other consent has been obtained nor have any services, equipment or facilities been tested. A lessee should satisfy themselves by inspection or otherwise. The VAT position relating to the property may change without notice. Please contact us for further information regarding the approved Client Money Protection (CMP) scheme and the property redress scheme which we are a member of.