

East Duplex Floors 04 - 05 4 Bedrooms + Gym + Service 5.5 Baths

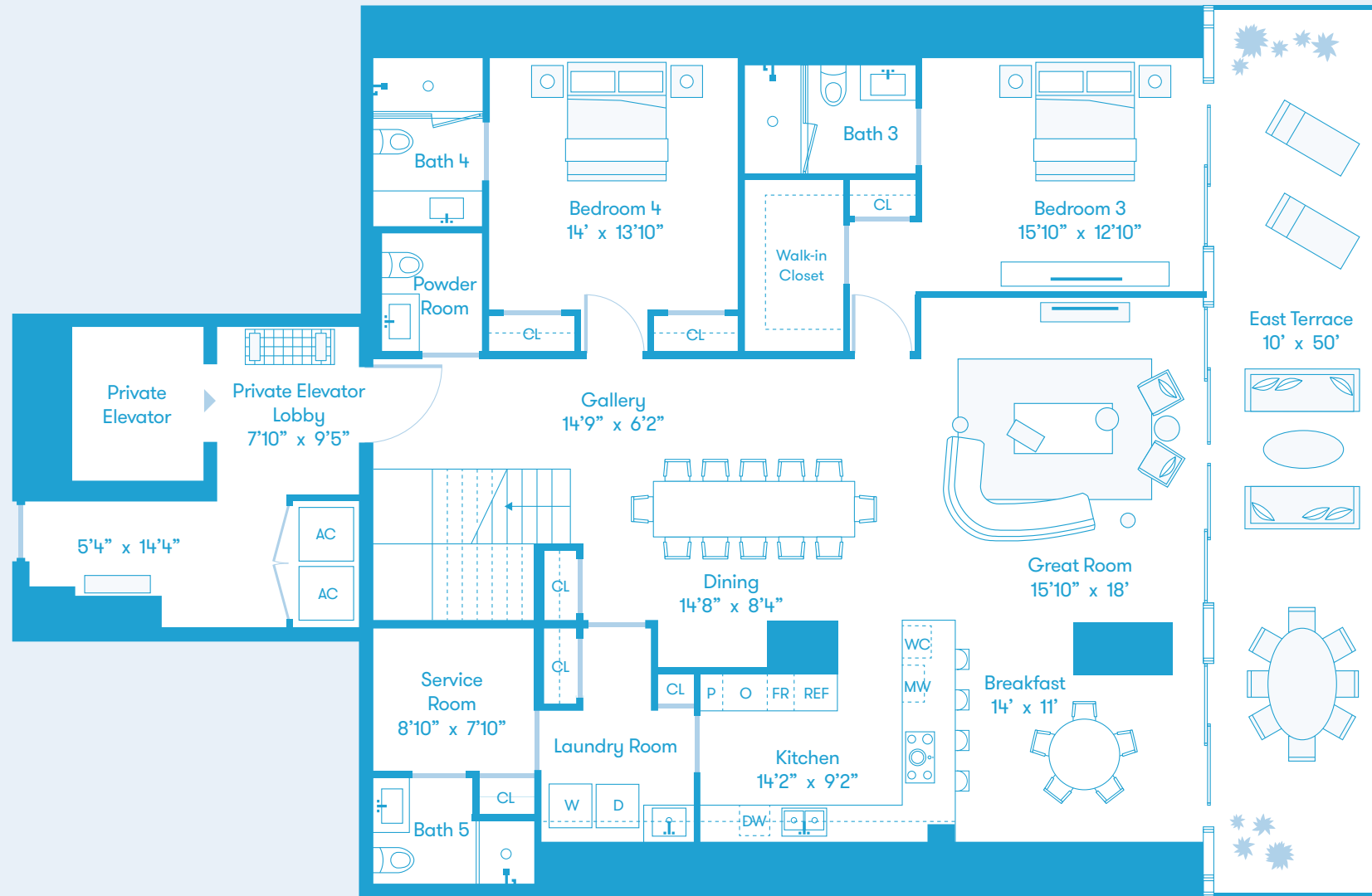
Lower Level Interior 2,450 Sq Ft / 227 Sq M Upper Level Interior 1,891 Sq Ft / 176 Sq M Total Interior 4,341 Sq Ft / 403 Sq M

Total Exterior 490 Sq Ft / 45 Sq M

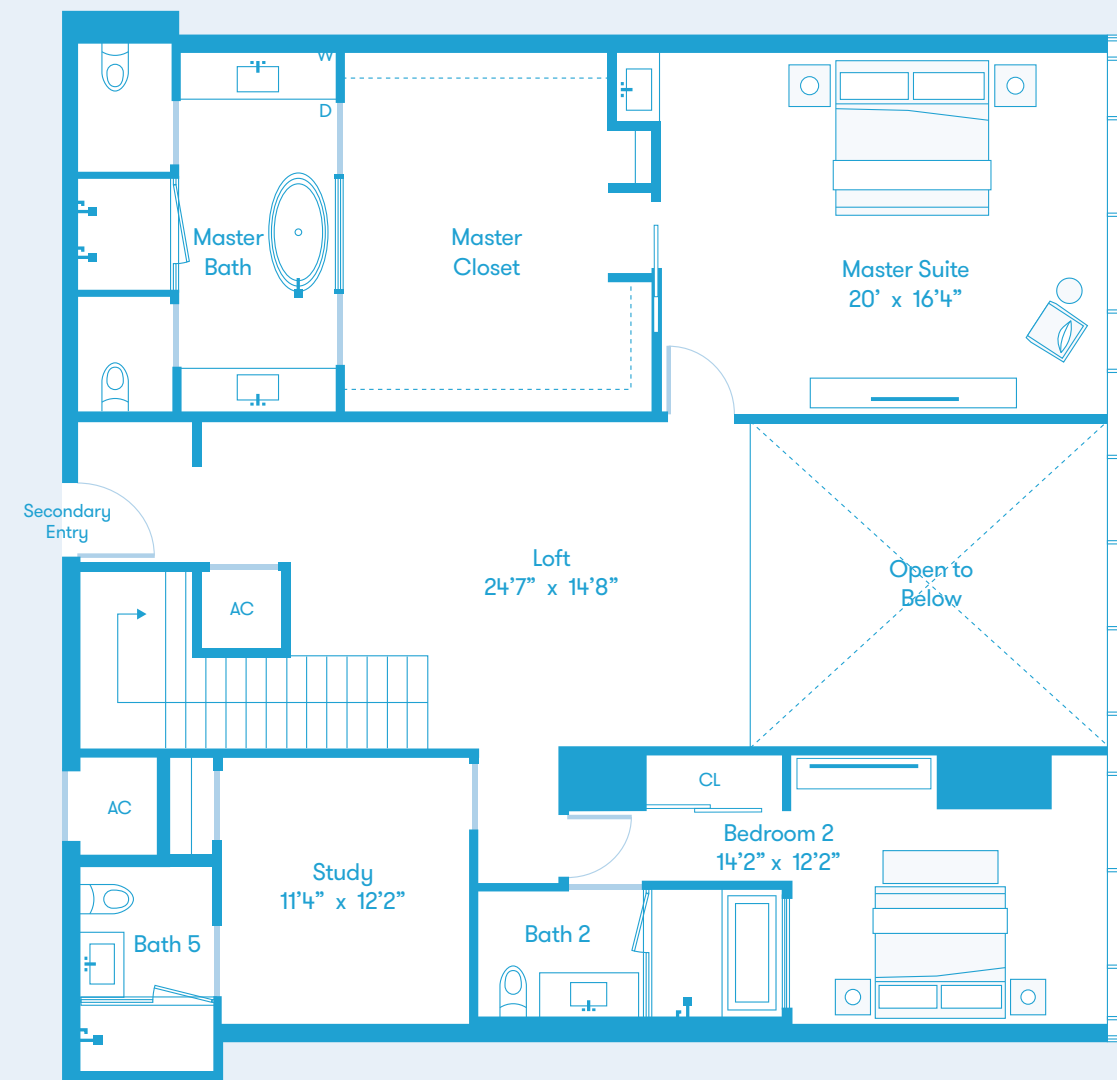
North ↑



Lower Level



Upper Level



Biscayne Bay

DEVELOPED BY OKO GROUP Cain International OB GROUP

EXCLUSIVE MARKETING AND SALES BY FORTUNE DEVELOPMENT SALES

MISSONIbaia
MIAMI RESIDENCES

All depictions of matters of detail shown herein, including, without limitation, items of finish, furniture and decoration, are conceptual only and are not necessarily included in the Unit. For a correct representation of the items included in the Unit, see the Purchase Agreement. Stated dimensions shown herein are approximate and are measured to the exterior face of exterior walls and to the center line of demising walls. This method of measurement varies from, and is larger than, the dimensions that would be determined by using the description and definition of the "Unit" set forth in the Declaration (which generally only includes the interior airspace between the perimeter walls and excludes interior structural components). Note that measurements of rooms set forth on this floor plan are generally taken at the greatest points of each given room (as if the room were a perfect rectangle), without regard for any cutouts. Accordingly, the area of the actual room will typically be smaller than the product obtained by multiplying the stated length times width. All dimensions are approximate and may vary with actual construction.

North Duplex Floors 04 - 05 4 Bedrooms + Study + Service 6.5 Baths

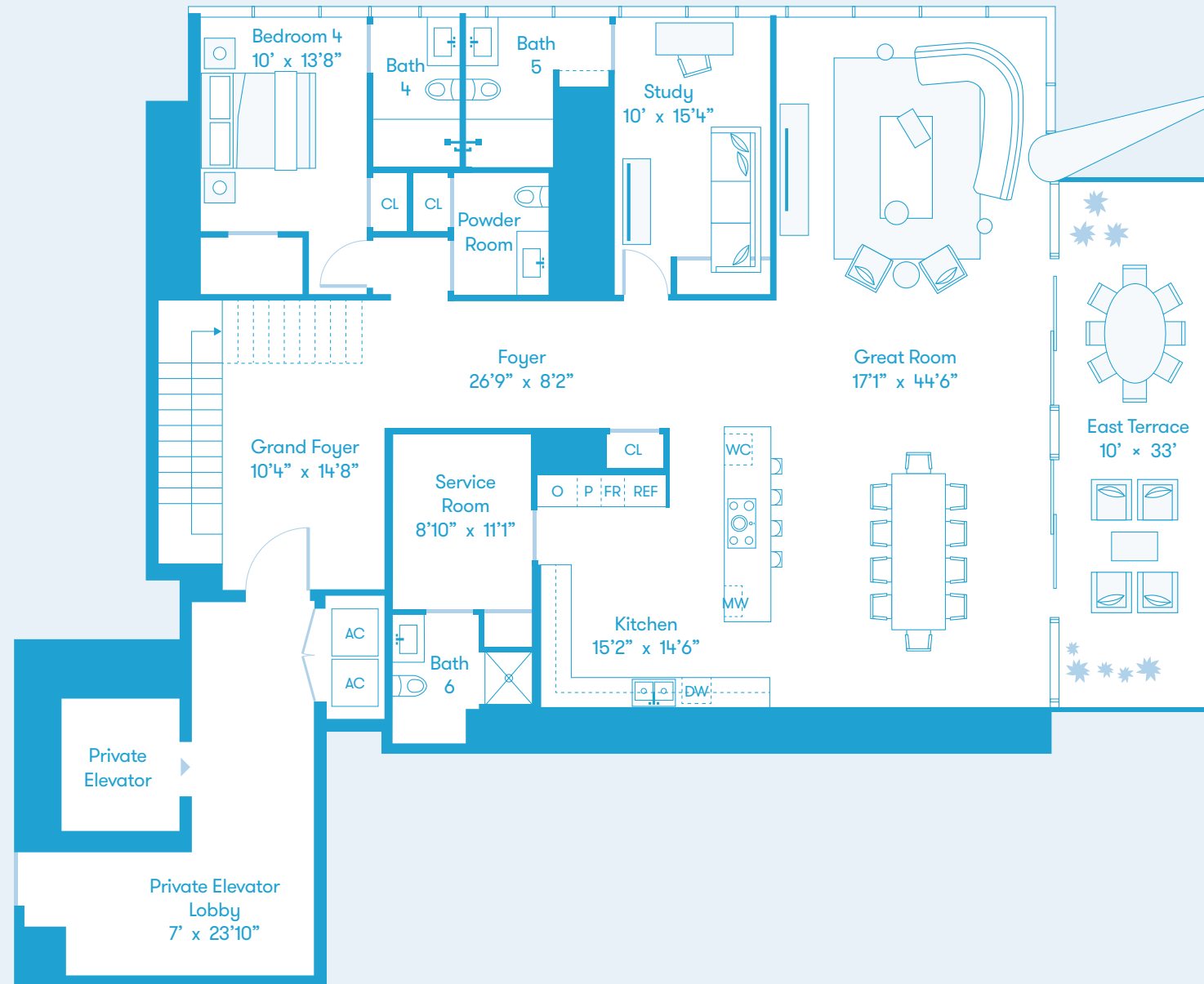
Lower Level Interior 2,868 Sq Ft / 266 Sq M Upper Level Interior 2,065 Sq Ft / 191 Sq M Total Interior 4,933 Sq Ft / 458 Sq M

Total Exterior 329 Sq Ft / 31 Sq M

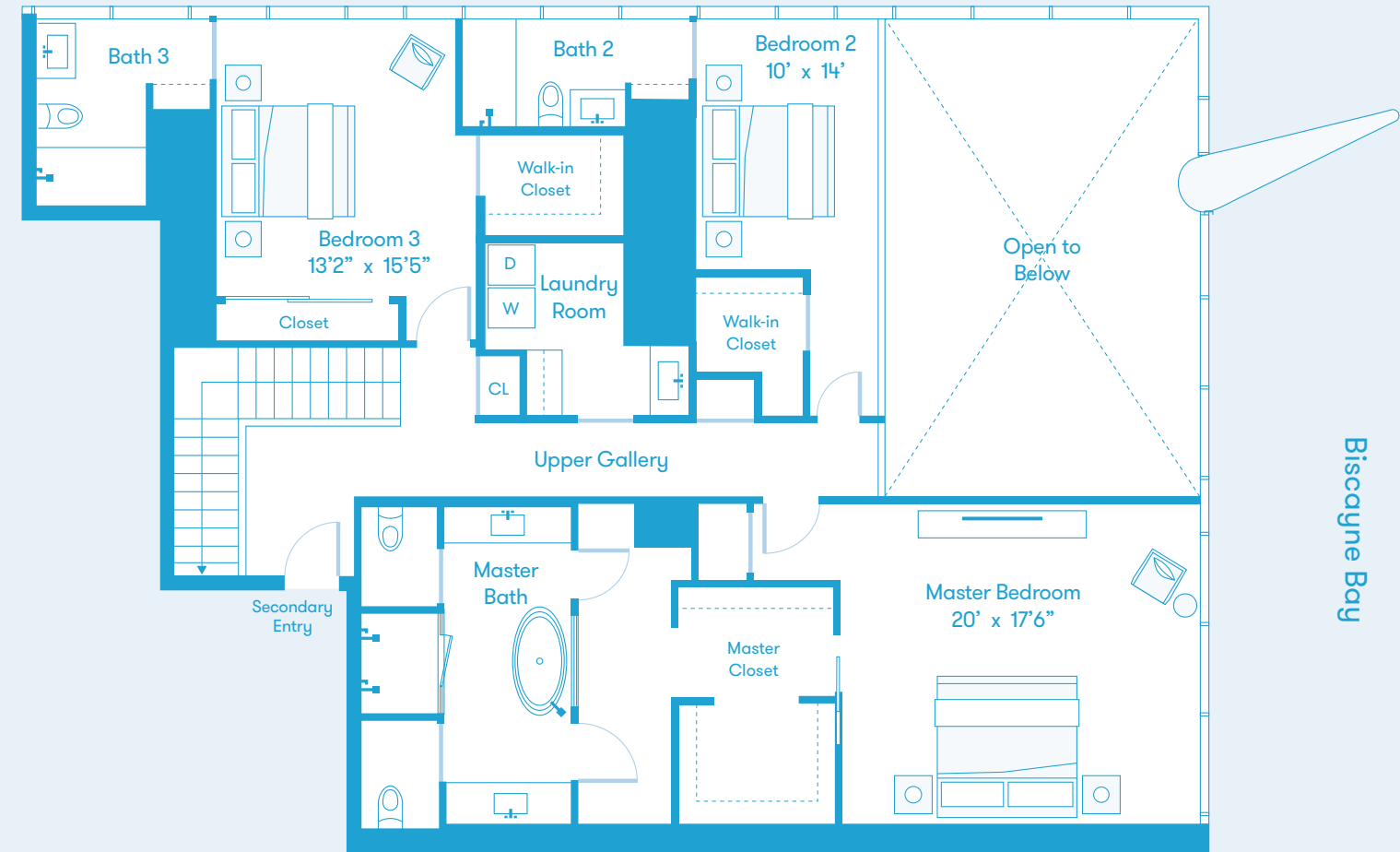
North ↑



Lower Level



Upper Level



Biscayne Bay

DEVELOPED BY OKO GROUP Cain International OB GROUP

EXCLUSIVE MARKETING AND SALES BY FORTUNE DEVELOPMENT SALES

MISSONIbaia
MIAMI RESIDENCES

All depictions of matters of detail shown hereon, including, without limitation, items of finish, furniture and decoration, are conceptual only and are not necessarily included in the Unit. For a correct representation of the items included in the Unit, see the Purchase Agreement. Stated dimensions shown hereon are approximate and are measured to the exterior face of exterior walls and to the center line of demising walls. This method of measurement varies from, and is larger than, the dimensions that would be determined by using the description and definition of the "Unit" set forth in the Declaration (which generally only includes the interior airspace between the perimeter walls and excludes interior structural components). Note that measurements of rooms set forth on this floor plan are generally taken at the greatest points of each given room (as if the room were a perfect rectangle), without regard for any cutouts. Accordingly, the area of the actual room will typically be smaller than the product obtained by multiplying the stated length times width. All dimensions are approximate and may vary with actual construction.

South Duplex Floors 04 - 05 4 Bedrooms + Study + Service 6.5 Baths

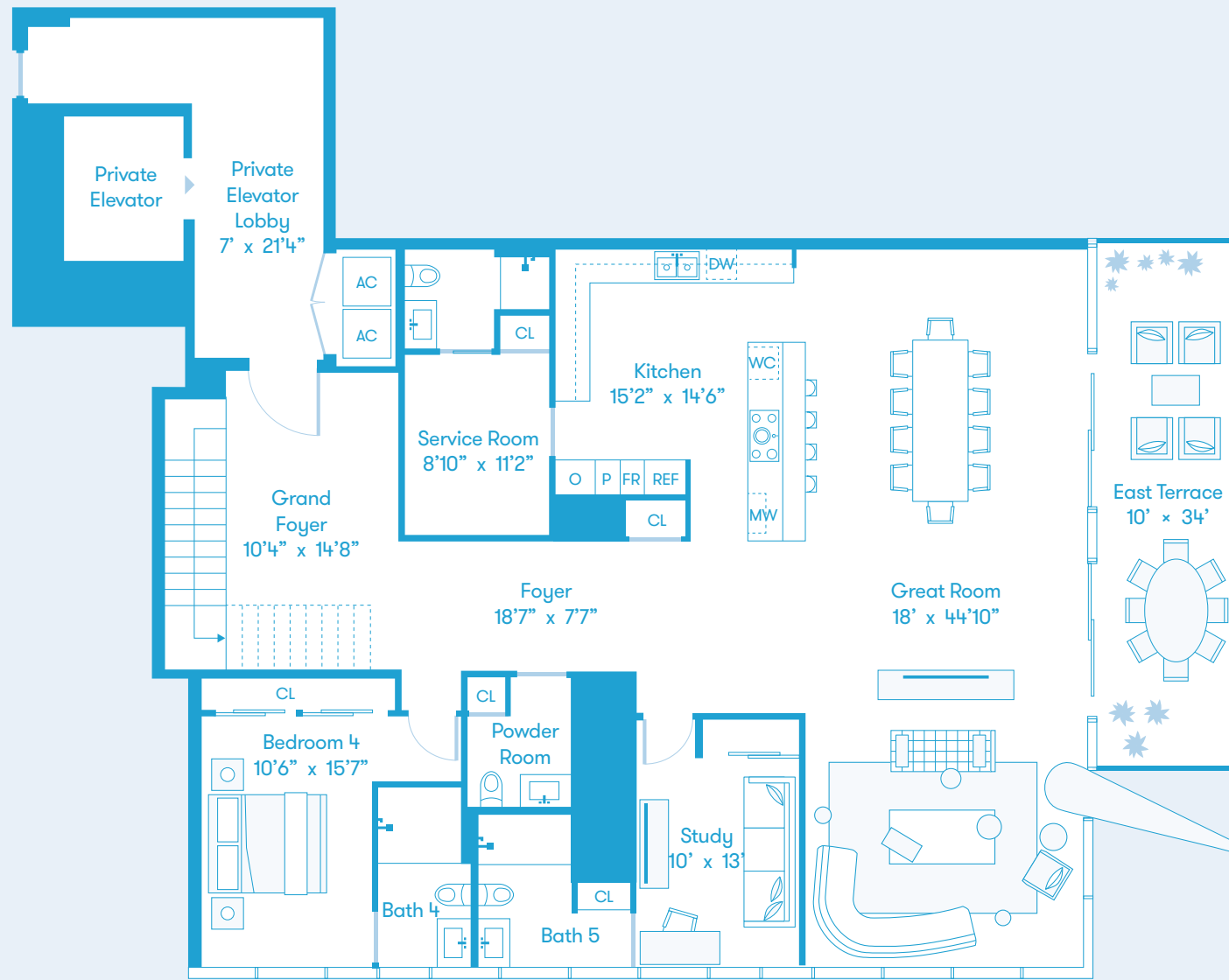
Lower Level Interior 2,818 Sq Ft / 262 Sq M Upper Level Interior 2,069 Sq Ft / 192 Sq M Total Interior 4,887 Sq Ft / 454 Sq M

Total Exterior 329 Sq Ft / 31 Sq M

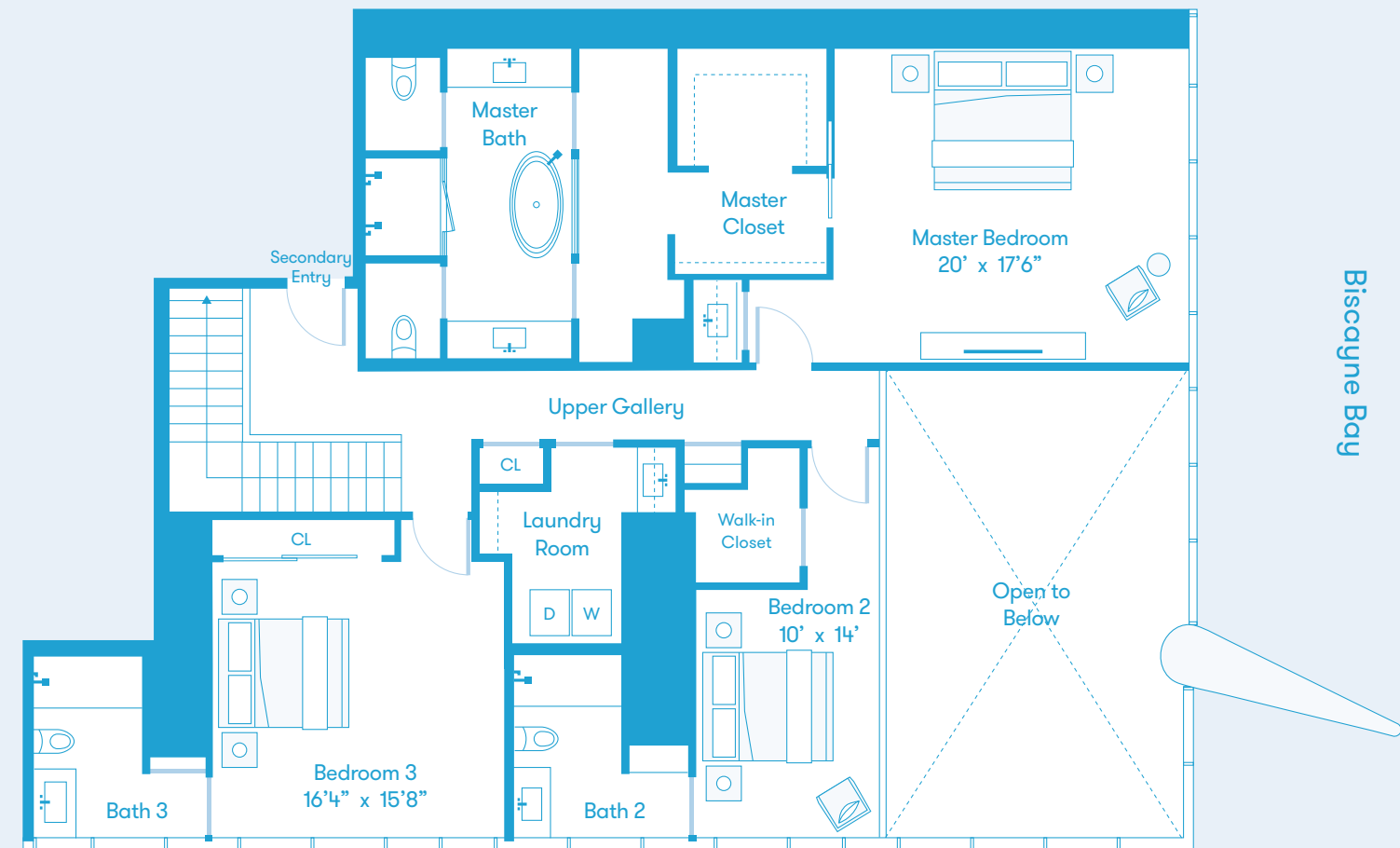
North ↑



Lower Level



Upper Level



Biscayne Bay

All depictions of matters of detail shown hereon, including, without limitation, items of finish, furniture and decoration, are conceptual only and are not necessarily included in the Unit. For a correct representation of the items included in the Unit, see the Purchase Agreement. Stated dimensions shown hereon are approximate and are measured to the exterior face of exterior walls and to the center line of demising walls. This method of measurement varies from, and is larger than, the dimensions that would be determined by using the description and definition of the "Unit" set forth in the Declaration (which generally only includes the interior airspace between the perimeter walls and excludes interior structural components). Note that measurements of rooms set forth on this floor plan are generally taken at the greatest points of each given room (as if the room were a perfect rectangle), without regard for any cutouts. Accordingly, the area of the actual room will typically be smaller than the product obtained by multiplying the stated length times width. All dimensions are approximate and may vary with actual construction.